

**INSTALLATION AND OPERATION INSTRUCTIONS
(MANUAL EB8-IM)**

AERO TWIN INC. EXTENDED BAGGAGE KIT NO. EB8-200

STC NUMBER: SA4625NM

FOR CESSNA MODELS 208, 208A AND 208B

MAY 15, 2018

NOTE:

THIS INSTALLATION BOOKLET BECOMES A PART OF THE PERMANENT AIRCRAFT RECORDS WHEN KIT NUMBER EB8-200 IS INSTALLED IN THE AIRCRAFT.

A/C Reg. No. _____ A/C Serial No. _____

A/C Total Time _____ Date of Installation _____

Installed by:

Company Name: _____

Address: _____

Install Technician: _____ A & P No. _____

Inspected By: _____ A & P No. _____

©2018 AERO TWIN INC.
ANCHORAGE, ALASKA

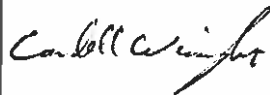
LOG OF REVISIONS			
REVISION		PAGES REVISED AND DESCRIPTION OF REVISION	APPROVAL SIGNATURE
NO.	DATE		
-----	3/8/90	Original Issue	-----
A	5/4/90	Revised Pages 1, 2, 4, 6, 7, 9, 10, 11, 12, 14, 15, and 16 per ECO AT-07	Alan C. Strickfaden
B	1/8/01	Revised all pages per ECO AT-61	Alan C. Strickfaden
C	08/01/01	Revised pages 2, 10, and 13 per ECO AT-71	Michael W. Lovett
D	10/10/04	Revised pages 4, 7, 8, 14, 15 per ECO AT-99	Kyle M. Taylor
E	2/22/08	Revised all pages per ECO AT-122	Jason M. Kepler
F	03/06/09	Revised all pages per ECO AT-133	Jason M. Kepler
G	09/18/13	Revised pages 1, 2, 7, 8, 14, and 15 per ECO AT-154	Jason M. Kepler
H	05/15/18	Revised pages 1, 2, 7, 8, and 10 per ECO AT-173	

TABLE OF CONTENTS

<u>SECTION</u>	<u>PAGE</u>
SECTION I - GENERAL INFORMATON	
A. KIT DESCRIPTION	4
B. OWNERSHIP REGISTRATION AND DOCUMENT REVISION SERVICE/ INSTRUCTIONS FOR CONTINUED AIRWORTHINESS	5
SECTION II - INSTALLATION PARTS LIST	6
SECTION III - WEIGHT AND BALANCE	8
SECTION IV - INSTALLATION INSTRUCTIONS	9
SECTION V - INSTALLATION DRAWING LIST	15

SECTION I – GENERAL INFORMATION

A. KIT DESCRIPTION

The Aero Twin Extended Baggage Kit No. EB8-200 is an extension to the existing fuselage cargo area, extending an additional four feet aft. This additional area is rated at 100 pounds maximum capacity. The useful load of the aircraft is reduced by the weight of the Extended Baggage Kit (36.3 pounds) less the weight of the removed cabin rear wall assembly, and the total cargo volume is increased by 22 cubic feet.

When the Extended Baggage Kit is installed the existing cabin rear wall assembly is removed and replaced by a barrier net. Installed behind the net are a slanted honeycomb floor panel and aluminum side panels, rear panel, and top panels, which make up the rest of the kit. These panels are easily removable, to service the existing systems and equipment.

An optional access cover is available for the extended baggage floor panel. The access cover allows quick and easy access to equipment installed underneath the baggage kit.

**B. OWNERSHIP REGISTRATION AND DOCUMENT REVISION SERVICE/
INSTRUCTIONS FOR CONTINUED AIRWORTHINESS**

Information in this publication is based on data available at the time of publication and may be updated, supplemented, and automatically amended by a revision or re-issuance. All such amendments become part of and are specifically incorporated within this publication. Users are urged to keep abreast of the latest amendments to this publication through information available on Aero Twin, Inc.'s website, <http://www.aerotwin.com>. The latest revision of the Instructions for Continued Airworthiness for all of Aero Twin, Inc.'s products are available for download at that website.

SECTION II - INSTALLATION PARTS LIST

PART NUMBER	QTY.	DESCRIPTION
EB8-101	1	FLOOR PANEL
EB8-102	1	FORWARD PANEL – LOWER
EB8-103-R	1	FLOOR BACKING FIXTURE – RH SIDE
EB8-103-L	1	FLOOR BACKING FIXTURE – LH SIDE
EB8-105	1	REAR PANEL
EB8-106-R	1	SIDE PANEL ASSY. – RH
EB8-106-L	1	SIDE PANEL ASSY. – LH
EB8-108	4	ANGLE – SIDE
EB8-109	1	ANGLE – REAR
EB8-110	2	ANGLE – SIDE
EB8-112	1	FORWARD PANEL ASSY. – UPPER
EB8-113	1	CROSS SUPPORT – UPPER CENTER
EB8-114	4	ANGLE – SIDE
EB8-115	1	ANGLE – FORWARD
EB8-117	1	TOP PANEL ASSY. – FORWARD
EB8-118	1	TOP PANEL ASSY – REAR
EB8-119-R	1	ANGLE – RH SIDE
EB8-119-L	1	ANGLE – LH SIDE
EB8-121-R	1	U-CHANNEL
EB8-121-L	1	U-CHANNEL
EB8-122-R	1	U-CHANNEL
EB8-122-L	1	U-CHANNEL
EB8-221-02-01	2	ANGLE
EB8-221-02-02	2	ANGLE
EB8-222-02R	1	ANGLE
EB8-222-02L	1	ANGLE
EB8-222-03R	1	ANGLE
EB8-222-03L	1	ANGLE
MS20470AD3-3	A/R	RIVETS
MS20426AD3-3	A/R	RIVETS
MS20426AD3-4	A/R	RIVETS

MS20470AD4-4	A/R	RIVETS
MS20470AD4-5	A/R	RIVETS
MS20470AD4-6	A/R	RIVETS
A10K80	12	RIVNUTS
AN970-3	21	WASHER
MS21059L3	22	NUT PLATE
AN525-10R8	5	SCREWS
AN525-10R16	21	SCREWS
MS24694-S52	8	SCREWS
CR3242-4-2	8	RIVETS
CR3243-4-4	2	RIVETS
EB8-171	2	TRIM ANGLE
20050-52 * ²	4	ANCHOR PLATE
A8K75	16	RIVNUTS
AN525-832R8	24	SCREWS
NAS1149FN816P	24	WASHERS
10RX1/2THB (ALT P/N S1021Z10-8)	45	SCREW
NAS1149F0332P	45	WASHER
A1787-10Z1	45	TINNERMAN CLIP
2609010-6 * ¹	16 ft ²	SOUND DEADNER TAPE
2015009-3	1	CARGO NET (OPTIONAL)
EB8-190A	1	PARTITON NET
EB8-193	1	CURTAIN (OPTIONAL)
EB8-191	1	PLACARD – CAPACITY
0405101-2	1	PLACARD – ELT COVER

(*¹) Sound deadener tape may have any of the following part numbers:
2609010-8, Y370, 4014-12

(*²) Anchor plate may have any of the following part numbers:
20050-52 or 40000-11

If the optional floor access panel is installed, the following additional parts will be supplied:

PART NUMBER	QTY.	DESCRIPTION
EB8-201 or EB8-201B	1	REINFORCED FLOOR PANEL* ³
EB8-9906	1	ACCESS PANEL COVER
AN52510R7 or AN52510R18	10	SCREWS

(*³) This part will be supplied in lieu of P/N EB8-101

If the optional ELT cover is to be installed, the following additional parts will be supplied:

PART NUMBER	QTY.	DESCRIPTION
R581462	2	RUBBER CHANNEL
EB8-306	1	DOUBLER
MS20426AD3-2	2	RIVETS
EB8-125	1	ELT COVER
S1115-21	3	WING STUD
S1115-9	3	LOCK RING
S1115-19	3	RECEPTACLE
CCR264CS3-4	6	CHERRY RIVETS
MS20470AD3-4	7	RIVETS

SECTION III – WEIGHT AND BALANCE

When the Aero Twin Extended Baggage Kit EB8-200 is installed, a new weight and balance must be determined according to the following data and incorporated into the aircraft records.

Equipment Installed	Weight (lbs.)	Arm (inches)	Moment (in.-lbs./1000)
Removed Cabin Rear Wall Assembly (to be determined at installation)			
Cessna Models 208 or 208A	(-_____)	308.0	(-_____)
Cessna Model 208B	(-_____)	356.0	(-_____)
Install Aero Twin Extended Baggage Kit No. EB8-200			
Cessna Models 208 or 208A	36.3	327.6	11.89
Cessna Model 208B	36.3	375.6	13.63
Optional baggage kit Floor access panel in Models 208 and 208A	1.25	328	0.41
Optional baggage kit Floor access panel in Model 208B	1.25	376	0.47

Complete FAA form 337 with the above data, referencing STC No. SA4625NM as the approval basis, and make appropriate flight manual and log book entries.

SECTION IV – INSTALLATION INSTRUCTIONS

This kit is designed for installation in the standard Cessna 208, 208A, & 208B Model Caravans, as equipped from the factory. There is ample room under the extended baggage floor panel to accommodate the empennage control cables as well as a variety of installed avionics. However it is possible to have installed equipment which might interfere with the extended baggage installation. If this is the case, either the equipment which interferes with the extended baggage kit must be moved, or this kit cannot be installed. Relocation of equipment must be accomplished in accordance with technical data approved by the FAA.

Your extended baggage kit may be equipped with an optional floor access cover, in which case your floor panel assembly, including the access cover and associated hardware, will have P/N EB8-201C or EB8-201D. All installation instructions listed subsequently refer to floor panel P/N EB8-101, which is the floor panel without the access cover. If the kit is equipped with the floor access cover, in all instances where P/N EB8-101 is specified in the instructions the same action may be performed with/on P/N EB8-201C or EB8-201D.

Properly support the aircraft at the rear while installing this kit, to prevent the aircraft from falling onto its tail. All modifications must be performed in accordance with AC 42.13-2A.

The sheet numbers referred to in Part A of the installation instructions are part of the drawing set (12 pgs. total) with drawing number EB8-I. Numbers in brackets represent the corresponding drawing sheet. Example: [5/12] means, “see sheet 5 of 12 in drawing set EB8-I.” When part numbers are referenced, the “P/N” term is left out and only the number is given.

Ensure all holes have been deburred and drill shavings removed before riveting.

NOTE: IF THE OPTIONAL ELT COVER IS TO BE INSTALLED, PLEASE REFERENCE DRAWING NUMBER EB8-I-ELT BEFORE CONTINUING.

PART A: FLOOR PANEL INSTALLATION

1. [2/12] Remove the existing cabin rear wall assembly, at fuselage station 308 for the Cessna models 208 and 208A, and fuselage station 356 for the Cessna model 208B. On the Cessna model 208 separate headliner from this rear wall assembly and remove the interior trim panels surrounding the left and right rear windows.
2. [2/12] On the Cessna Models 208A or 208B models only, remove the strap assemblies located behind the rear wall.
3. [2/12] Remove the cross support, Cessna P/N 2615031-6, by drilling out the four rivets (2 each side) which fasten it to the fuselage bulkhead. This cross support is located eight inches below the upper surface of the aircraft at fuselage station 308 in Cessna models 208 and 208A, and fuselage station 356 in Cessna model 208B

Note: The removed rear wall assembly and cross support will not be used. Store or discard as desired.

4. If installed, remove the oxygen cylinder attached to the upper interior surface of the fuselage just aft of the existing rear wall at fuselage station 308 in Cessna models 208 and 208A, and fuselage station 356 in Cessna model 208B. Remove per FAA Approved Maintenance Manual.

Caution: Depressurize oxygen bottle and store properly to prevent damage.

5. Sheet 2 of 12 gives an overview of the complete installation.
6. [3/12] Position the lower forward panel, EB8-102. This panel is located such that the distance from bend centerline to the lower center fuselage skin is 11 $\frac{3}{4}$ inches. Before riveting, remove the 6 existing rivets, 3 each side at the lower corners, which interfere with the installation of this part.
7. [3/12] Install the lower forward panel, EB8-102. Rivet across the lower surface through pilot holes. Rivet across the RH and LH sides, picking up those rivet holes where existing rivets were removed in the previous step. Install rivets at 1 to 3 inch intervals, ensuring minimum rivet edge distance of $\frac{1}{4}$ inch. Fit, cut, and install sound deadener tape, 2609010-6, to the rear surface of the lower forward panel.
8. [4/12] Locate the rear panel, EB8-105, and four side angles, EB8-114. The rear panel is located such that the vertical distance from the lower bend centerline to the lower center fuselage skin is 18.0 inches. The side angles are sandwiched between the rear panel and the existing fuselage bulkhead, per detail B-B [4/12].
9. [4/12] Install the rear panel by riveting on the RH and LH sides at 2 to 4 inch intervals (except at the side angle, which requires 2 rivets $\frac{3}{4}$ of an inch apart). Ensure minimum rivet edge distance of $\frac{1}{4}$ inch.
10. [4/12] Locate and install the RH and LH floor backing fixtures, EB8-103-R/L. Ensure the attach surfaces of the backing panel, EB8-102, and rear panel, EB8-105, form a flat plane for the floor panel, EB8-101, to rest on. Match drill rivet holes through the existing pilot holes and fuselage skin with a #30 bit.
11. [5/12] Temporarily position the honeycomb floor panel, EB8-101, centering it on all four attach surfaces.
12. [5/12] Match drill, through existing pilot holes, around the perimeter of floor panel, EB8-101, with a #10 bit.
13. [5/12] Remove the floor panel.
14. [5/12] Drill out rivnut pilot holes, at the locations where the floor panel attaches to the RH and LH side backing fixtures, EB8-103-L/R, with a $\frac{1}{4}$ inch bit. Notch these holes to match rivnuts, A10K80. Install rivnuts in these locations as shown on sheet 5. Use proper rivnut

installation tool (use tool P/N TP225 or TP283 available from U.S. Industrial Tool & Supply Company, 15101 Cleat St., Plymouth, Michigan 48170, Phone: (313) 455-3388, or equivalent).

15. [5/12] Temporarily reinstall the floor panel, EB8-101. Fasten at the sides only.
16. [5/12] Position the forward angle, EB8-115, centered on the floor panel, EB8-101. Position so the pilot holes on the forward angle, EB8-115, are on its vertical surface. Drill out pilot holes on the forward panel, EB8-102, with a #30 bit. Clamp, with cleco fasteners.
17. [5/12] Drill, with a #10 bit, the five screw holes on the slanted surface of the forward angle, EB8-115. This is done using a hole finder to locate the existing holes in the lower forward panel and floor panel, EB8-102 and EB8-101.
18. [5/12] Remove the cleco fasteners in the forward angle, EB8-115, and match drill these holes with a #10 bit.
19. [5/12] Remove the forward angle, EB8-115 and the floor panel, EB8-101.
20. [5/12] [6/12] Install nut plates, MS21059L3, at the screw hole locations behind the vertical surface and slanted surface of the lower forward panel, EB8-102, as well as at the lower surface at the attach flange of the rear panel, EB8-105. Use nut plates as a pattern to locate rivets, MS20426AD3-3.
21. [5/12] [6/12] Permanently reinstall the floor panel and forward angle, EB8-101 and EB8-115.

NOTE: The following steps outline the installation procedure for the side panels, panel mounting angles, and backing fixtures. The locating and drilling steps locate the screw holes which will eventually hold the side panels in place. A total of 18 screws per side anchor the side panels. The lower flanges of the side panels are screwed to the honeycomb floor panel. Along the side, at all but the forward locations, the side panels are held in place with screws and tinnerman clips. In all circumstances these screw holes are to be centered on their respective attachment flanges, 0.40 +/- 0.10 inch from sheet metal edge. This is required to allow sufficient edge distance to anchor the tinnerman clips. At the forward side panel locations, anchor plates secure the side panels. The anchor plates are affixed with screws and nut plates. Unfortunately, all the screw hole locations are not easily determined as they are hidden behind the aluminum side panels. In each case these holes must be carefully located **BEFORE** drilling.

22. [8/12] [7/12] Rivet the side angles, EB8-108, to the fuselage bulkheads, per detail 1 [7/12] (two per side). Drill rivet holes through existing pilot holes and fuselage bulkheads with a #30 bit. Clamp the backing fixtures in place with cleco fasteners.
23. [8/12] On the left side only, position U-channels, EB8-121-L and EB8-122-L, with their respective angles (as shown on EB8-I, sheet 2 of 12), such that the angles are on the outside of the U-channels. Match drill rivet holes through pilot holes in respective angles into the fuselage skin using a #30 bit. Clamp the angles in place with cleco fasteners.

24. [8/12] On the left side only, position a straight edge along the inboard side of EB8-108 and EB8-114 (2 locations), up to the forward bulkheads. Position EB8-121-L and EB8-122-L such that the inboard side is flush with the straight edge and the forward end fits snugly under the inboard flange of the bulkhead. Maintaining this position, match drill the forward and aft rivet holes of the angles into their respective U-channels and clamp in place using cleco fasteners. Match drill the remaining five holes from each angle into the U-channel using a #30 bit. Install seven MS20470AD4-4 rivets on each side of EB8-121-L and EB8-122-L (28 rivets total).
25. [8/12] On the right side only, position U-channels, EB8-121-R and EB8-122-R with their respective angles (as shown on EB8-I, sheet 2 of 12) so that the angles are on the outside of the U-channels. Hold in place with masking tape.
26. [8/12] Position the right side panel, EB8-106-R, these panels sit on top of the honeycomb floor panel, EB8-101, and butts up against the rear panel, EB8-105.
27. [8/12] On the right side panel only, ensure that the Zeus fasteners on the ELT cover, if installed, clear the upper right U-channel, EB8-121-R. If the Zeus fasteners on the ELT cover interfere with the upper right U-channel, move the upper right U-channel, EB8-121-R, with its angles (see EB8-I sheet 2 of 12) upward until clearance is achieved. This will ensure proper position of the upper right U-channel, EB8-121-R. The lower right U-channel, EB8-122-R, should be positioned with angles as shown on [2/12 & 8/12]. Remove the right hand side panel, EB8-106-R.
28. [8/12] With the angles correctly positioned to hold the correctly positioned U-channels (EB8-121-R and EB8-122-R) in place, match drill rivet holes through pilot holes at the fuselage skin with a #30 bit. Clamp, the angles in place with cleco fasteners.
29. [8/12] On the right side only, position a straight edge along the inboard side of EB8-108 and EB8-114 (2 locations) up to the forward bulkheads. Position EB8-121-R and EB8-122-R such that the inboard side is flush with the straight edge and the forward end fits snugly under the inboard flange of the bulkhead. Maintaining this position, match drill the forward and aft holes of the angles into their respective U-channels and clamp in place using cleco fasteners. Match drill the remaining holes from each angle into the U-channels using a #30 bit. Install seven MS20470AD4-4 rivets on each side of EB8-121-L and EB8-122-L (28 rivets total).
30. [7/12][8/12] Position the RH and LH side panels, EB8-106-L/R. These panels sit on top of the honeycomb floor panel, EB8-101, and butt up against the rear panel, EB8-105. The panels might require minor trimming at the front and rear to fit snugly. The forward edge of the side panels should be 0 to ¼ inch behind the edge of the existing fuselage bulkhead, as shown on detail D-D [8/12].
31. [7/12] At RH and LH side panels, EB8-106-L/R, match drill pilot holes, with a #30 bit, through the lower flange of the side panels and the top surface ONLY of the honeycomb

- floor panel, EB8-101 (8 holes per side). At these hole locations in the floor panel, drill holes with a #2 bit and notch to match rivnuts. Install rivnuts as shown on [7/12].
32. [8/12] At the locations (4 per side) where the side panels, EB8-106-L/R, rest against the side angles, EB8-108 and EB8-114, carefully measure and drill screw holes with a #10 bit. These holes should be centered on the angles, EB8-108 and EB8-114, as shown on detail 1 [8/12].
 33. [8/12] At the locations where the side panels, EB8-106-L/R, rest against the rear edges of the U-channels, EB8-121-R/L and EB8-122-R/L, drill screw holes, one through each U-channel, with a #10 bit.
 34. [8/12] At the forward locations where the side panels, EB8-106-L/R, rest against the doublers of the U-channels, EB8-121-R/L and EB8-122-R/L, drill the anchor plate attachment screw holes, with a #10 bit. Two holes, one inch apart, are required per U-channel. See detail 2 [8/12].
 35. [8/12] Remove the side panels, EB8-106-L/R, and the U-channel, EB8-121-R/L and EB8-122-R/L.
 36. [8/12] At the screw hole locations in the U-channels, EB8-121-R/L and EB8-122-R/L, where the anchor plates, 20050-52, attach, install nut plates, MS21059L3.
 37. [8/12] Install U-channels EB8-121-R/L and EB8-122-R/L, with their respective angles, EB8-221-02-R/L and EB8-222-03-R/L.
 38. [8/12] Install tinnerman clips, A1787-10Z1, at the screw hole locations in the side angles, EB8-114 and EB8-108, as well as the rear locations of the side backing fixtures, EB8-121-R/L and EB8-122-R/L. A total of 12 clips (6 per side) are to be installed.
 39. [8/12] Before securing side panels, approximately position the upper center cross support, EB8-113, which rests on top of the side panels behind the bulkhead at fuselage station 323 in Cessna models 208 and 208A, and fuselage station 371 in Cessna model 208B, per detail 2 [11/12]. Do not yet permanently install the cross support.
 40. [8/12] Install RH and LH side panels, EB8-106-L/R.
 41. [8/12] Install side panel anchor plates, 4ea. 20050-52, using screws, MS24694-S52.
 42. [8/12] Locate and install the rear angle, EB8-109 per [7/12]. Install this angle, centered on the rear panel, so that it aligns with the upper flange of the RH & LH side panels, EB8-106-L/R. Fit, cut, and install sound deadener tape, 2609010-6, to the rear surface of the rear panel, EB8-105.
 43. [8/12] Accurately position the forward cross support, EB8-113 (this has already been roughly positioned). Install cross support such that it rests on top of the upper flange of the RH & LH side panels, EB8-106-L/R.

44. [9/12] Locate and install upper front panel and angles, EB8-119-L/R, EB8-112, and EB8-110. Remove any rivets which interfere with the installation of the top panel. Replace these removed rivets with rivets of equal or greater strength through the top panel when it is installed. Position this panel so that it aligns with the upper flange of the RH & LH side panels, EB8-106-L/R. Rivet front panel, EB8-112, along each side and along the top edge at 2 to 4 inch intervals. On Cessna model 208, trim angles, EB8-119-L/R, as required to clear window trim. Attach angles, EB8-119-L/R and EB8-110. Fit, cut, and install sound deadener tape, 2609010-6, to the rear surface of the upper front panel.
45. [10/12] Fit the rear top panel, EB8-118, in place. Trim to fit, as required. Locate and drill screw holes through the rear panel upper flanges, and side panel upper flanges as shown on sheet 10. Across the upper center cross support, EB8-113, match drill screw holes from above. Then remove rear top panel, EB8-118.
46. [10/12] Cut and apply sound deadener tape, 2609010-6, to fit between rear top panel, EB8-118, stiffeners.
47. [10/12] Fit the forward top panel, EB8-117, in place. Trim to fit, as required. Locate and drill screw holes through the forward panel upper flanges and side panel upper flanges. Across the upper center cross support, match drill screw holes, from above. Then remove forward top panel.
48. [10/12] Cut and apply sound deadener tape, 2609010-6, to fit between forward top panel, EB8-117 stiffeners.
49. [10/12] [11/12] Install tinnerman clips, A1787-10Z1, in the hole locations of the flanges of the RH and LH side panel EB8-106-L/R, rear angle EB8-109, forward cross support EB8-112, and center cross support EB8-113.
50. [10/12] Reinstall and service the oxygen bottle per the FAA approved maintenance manual.
51. [10/12] [11/12] Install the rear top panel, EB8-118.
52. [10/12] [11/12] Install the forward top panel, EB8-117.
53. [12/12] On Cessna model 208 secure the headliner at the upper forward panel, EB8-112. Tuck the end of the vertical portion of the headliner into the retainer that extends across the panel. See sheets 2 and 8 for illustrations of the headliner retainer.
54. [2/12] Fit, trim and install the two trim angles, EB8-171, at each side of the extended baggage. These trim angles are located at fuselage station 308 in Cessna models 208 and 208A, and fuselage station 356 in the Cessna model 208B, at the forward edge of the side panels. Trim the ends and sides of the trim angles to match the extended baggage floor and top panel installation as well as the existing installed interior coverings. Locate and drill attachment screw holes, 4 per trim angle with a # 10 bit, to match the existing holes and nut plates in the fuselage bulkhead. Attach the trim angles with screws and washers, AN525-832R8 and NAS1149FN816P.

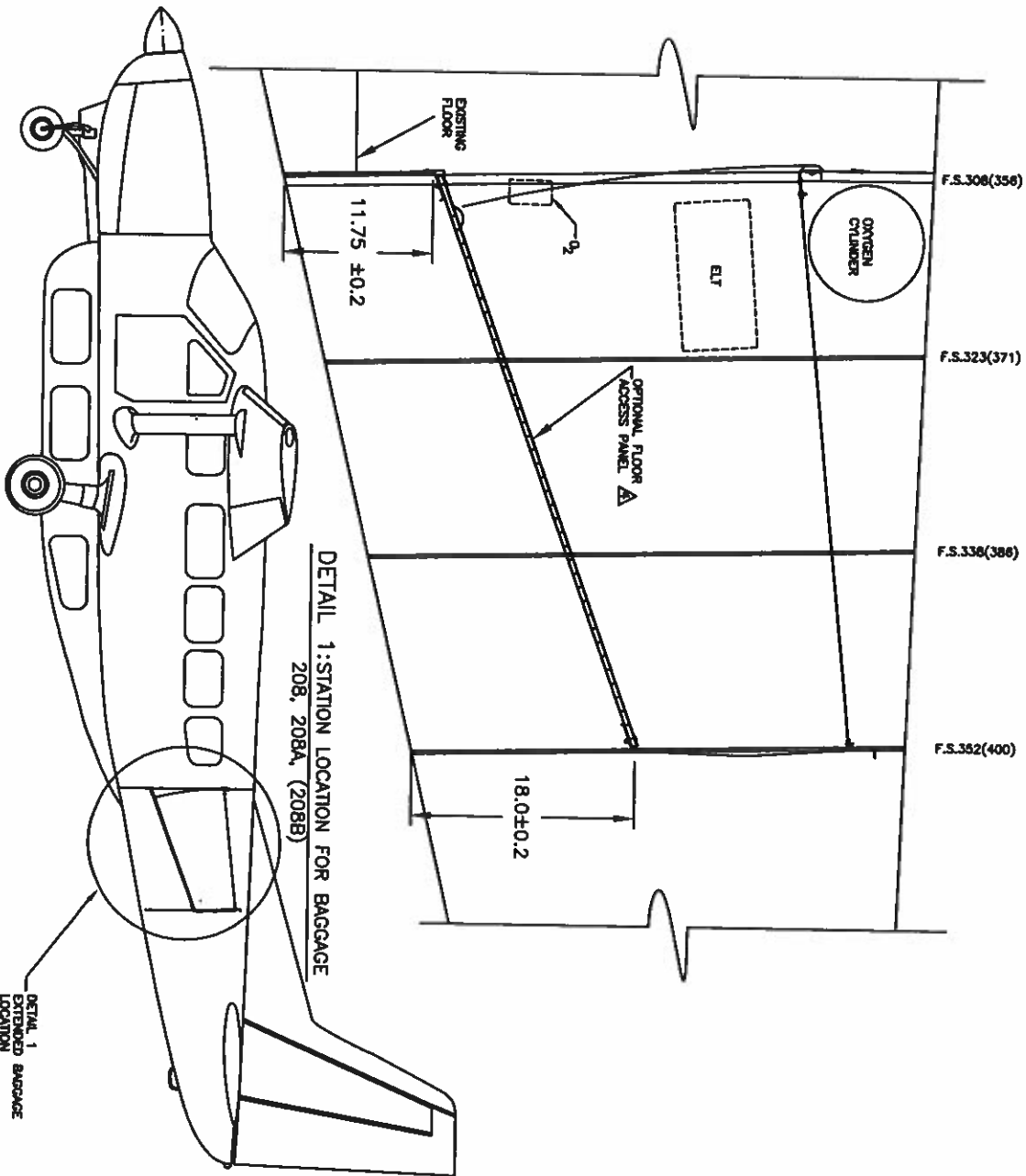
55. [12/12] Install capacity placard, EB8-191, centered across the upper forward panel, EB8-112. The placard has a self-adhesive backing. Attach at 3 inches above the lower edge of the panel.
56. [12/12] Install ELT cover placard, EB8-192, centered across the ELT cover, located on the RH side panel, EB8-106-R. The placard has a self-adhesive backing.
57. If desired, install curtain, EB8-193, using drawing EB8-193-I sheet 1 of 1.
58. If desired, install partition net, EB8-190A. This is performed by attaching the fasteners on the top bottom and sides of the net to corresponding anchor plates on the extended baggage modification.
59. If your extended baggage kit is equipped with an optional floor access panel, instructions for installation and removal of the access panel can be found on drawing EB8-BA, sheet 4 of 4, latest approved revision. The access panel can be removed and reinstalled quickly to facilitate inspection of airframe items located underneath the baggage kit. The floor access panel is an option and may not be installed on your particular kit. Contact Aero Twin Inc. for more information on how to retrofit your existing extended baggage kit with a floor access panel.

1. SECTION V- INSTALLATION DRAWING LIST

The following drawings are included with the kit.

DWG NO	SHEET	TITLE	REVISION	DATE
EB8-I	1	EXTENDED BAGGAGE	B	02/22/08
EB8-I	2	EXPLODED VIEW EB8-200	C	03/06/09
EB8-I	3	FORWARD PANEL	---	08/30/00
EB8-I	4	REAR PANEL AND FLOOR SUPPORTS	---	08/30/00
EB8-I	5	REAR PANEL AND FLOOR SUPPORTS	C	12/10/04
EB8-I	6	FLOOR PANEL DETAILS	B	12/10/04
EB8-I	7	SIDE PANELS AND FLOOR SUPPORTS	A	12/10/04
EB8-I	8	SIDE PANEL INSTALLATION	C	03/06/09
EB8-I	9	UPPER FORWARD PANEL AND ANGLES	---	08/30/00
EB8-I	10	TOP PANEL INSTALLATION	---	08/30/00
EB8-I	11	FORWARD AND TOP PANEL DETAILS	---	08/30/00
EB8-I	12	REINFORCEMENT PLATES	C	02/22/08
EB8-193-I	1	CURTAIN INSTALLATION	---	01/08/01
EB8-BA	4	FLOOR ACCESS PANEL (*1)	---	10/14/04
EB8-I-ELT	1	ELT COVER INSTALL OPTION	---	02/22/08



(*1) This drawing will only be supplied if the floor access cover option has been requested.



CESSNA 208

DETAIL 1
EXTENDED BAGGAGE
LOCATION

NOTES:

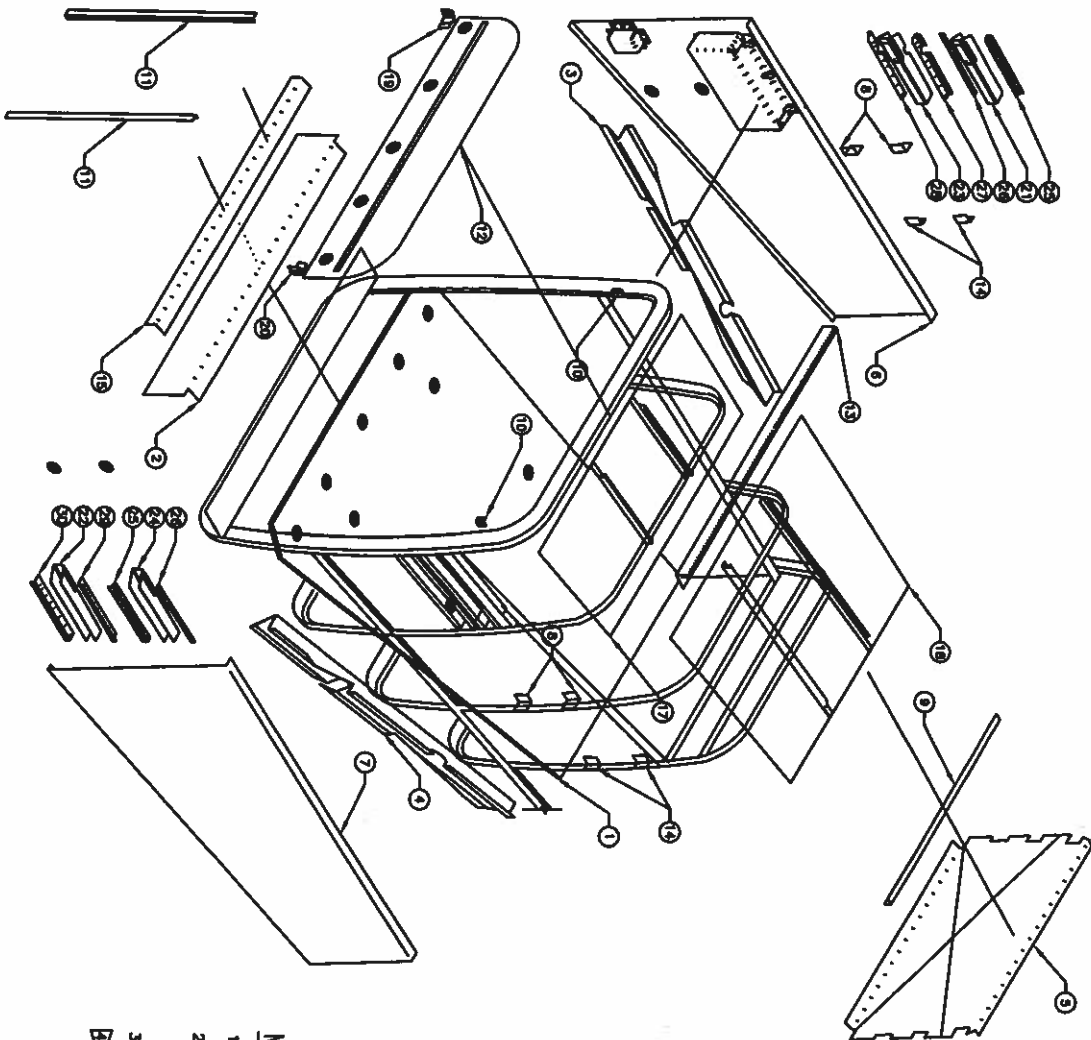
1. LOCATE POSITION OF BAGGAGE COMPARTMENT PER INSTALLATION MANUAL (MANUAL EBB-1M) PAGE 9 PART A.
2. FUSELAGE STATION REFERS TO CESSNA 208 AND 208A MODELS FOR NON-PARENTHESESIZED NUMBER AND CESSNA 208B MODEL FOR NUMBER IN PARENTHESES. SEE INSTALLATION INSTRUCTIONS FOR PROPER INSTALLATION SEQUENCE AND FURTHER INFORMATION NOT CONTAINED IN THIS DRAWING SET.
3.  SHOWN WITH OPTIONAL ELT COVER INSTALLATION ON RIGHT PANEL.
5.  RESERVED.

QTY	PART NO.	DESCRIPTION	MATERIAL	DIMENSIONS	REVISION	DATE	BY
2	888-88	INSTALLATION AND REPAIRMAN MANUAL					
1	888-200	EXTENDED BAGGAGE KIT					
1		DESCRIPTION					

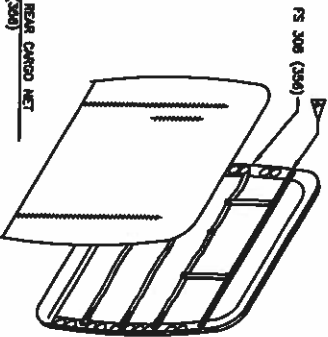
AERO TWIN, INC.
1400 WINDY HILL DRIVE, WINDY HILL, MS 39391

EXTENDED
BAGGAGE

REV.	DATE	DESCRIPTION	BY
1	08-11-18	CSW	
2	09-28-00	BNS	
3	10-11-00	DMT	
4	01-09-01		



EXISTING REAR CANOPY NET
F.S. 300(350)



QUANTITIES LISTED ARE FOR ONE (1) COMPLETE EBB-200 SET.

ITEM NO.	PANEL NO.	DESCRIPTION	QTY	SIZE
1	EBB-201D	FLOOR PANEL	4	4' x 4'
2	EBB-102	FLOOR PANEL - LOWER	13	7' x 20"
3	EBB-103-F	FLOOR PACKING FIXTURE - FR. SIDE	7	7' x 20"
4	EBB-103-R	FLOOR PACKING FIXTURE - RT. SIDE	7	7' x 20"
5	EBB-102	REAR PANEL	4	4' x 20"
6	EBB-108	STRAP PANEL ASSY - FR	4	4' x 20"
7	EBB-108	STRAP PANEL ASSY - RT	4	4' x 20"
8	EBB-109	ANGLE - SIDE	11	8' x 10"
9	EBB-110	ANGLE - SEAT UPPER SUPPORT	3	3' x 20"
10	EBB-110	ANGLE - SEAT - FORWARD	20	8' x 20"
11	EBB-111	ANGLE - SEAT - FORWARD	20	8' x 20"
12	EBB-112	CHINAWARE PANEL ASSY - UPPER	2	11' x 20"
13	EBB-114	ANGLE - SEAT - CENTER	2	11' x 20"
14	EBB-114	ANGLE - SEAT - CENTER	2	11' x 20"
15	EBB-115	ANGLE - FORWARD	2	11' x 20"
16	EBB-116	TOP PANEL ASSY - FORWARD	2	11' x 20"
17	EBB-117	TOP PANEL ASSY - REAR	2	11' x 20"
18	EBB-118	ANGLE - RT. SIDE	5	13' x 20"
19	EBB-118-L	ANGLE - LT. SIDE	5	13' x 20"
20	EBB-118-F	U-CHANNEL	4	7' x 10"
21	EBB-121-F	U-CHANNEL	2	7' x 10"
22	EBB-121-R	U-CHANNEL	2	7' x 10"
23	EBB-122-F	U-CHANNEL	4	8' x 10"
24	EBB-122-R	U-CHANNEL	4	8' x 10"
25	EBB-211-02-01	ANGLE	8	8' x 20"
26	EBB-211-02-02	ANGLE	8	8' x 20"
27	EBB-222-02M	PANEL	8	8' x 20"
28	EBB-222-02R	PANEL	8	8' x 20"
29	EBB-222-02L	PANEL	8	8' x 20"
30	EBB-222-02	PANEL	8	8' x 20"
31	EBB-222-02	PANEL	8	8' x 20"
32	EBB-222-02	PANEL	8	8' x 20"
33	EBB-222-02	PANEL	8	8' x 20"
34	EBB-222-02	PANEL	8	8' x 20"
35	EBB-222-02	PANEL	8	8' x 20"
36	EBB-222-02	PANEL	8	8' x 20"
37	EBB-222-02	PANEL	8	8' x 20"
38	EBB-222-02	PANEL	8	8' x 20"
39	EBB-222-02	PANEL	8	8' x 20"
40	EBB-222-02	PANEL	8	8' x 20"
41	EBB-222-02	PANEL	8	8' x 20"
42	EBB-222-02	PANEL	8	8' x 20"
43	EBB-222-02	PANEL	8	8' x 20"
44	EBB-222-02	PANEL	8	8' x 20"
45	EBB-222-02	PANEL	8	8' x 20"
46	EBB-222-02	PANEL	8	8' x 20"
47	EBB-222-02	PANEL	8	8' x 20"
48	EBB-222-02	PANEL	8	8' x 20"
49	EBB-222-02	PANEL	8	8' x 20"
50	EBB-222-02	PANEL	8	8' x 20"
51	EBB-222-02	PANEL	8	8' x 20"
52	EBB-222-02	PANEL	8	8' x 20"
53	EBB-222-02	PANEL	8	8' x 20"
54	EBB-222-02	PANEL	8	8' x 20"
55	EBB-222-02	PANEL	8	8' x 20"
56	EBB-222-02	PANEL	8	8' x 20"
57	EBB-222-02	PANEL	8	8' x 20"
58	EBB-222-02	PANEL	8	8' x 20"
59	EBB-222-02	PANEL	8	8' x 20"
60	EBB-222-02	PANEL	8	8' x 20"
61	EBB-222-02	PANEL	8	8' x 20"
62	EBB-222-02	PANEL	8	8' x 20"
63	EBB-222-02	PANEL	8	8' x 20"
64	EBB-222-02	PANEL	8	8' x 20"
65	EBB-222-02	PANEL	8	8' x 20"
66	EBB-222-02	PANEL	8	8' x 20"
67	EBB-222-02	PANEL	8	8' x 20"
68	EBB-222-02	PANEL	8	8' x 20"
69	EBB-222-02	PANEL	8	8' x 20"
70	EBB-222-02	PANEL	8	8' x 20"
71	EBB-222-02	PANEL	8	8' x 20"
72	EBB-222-02	PANEL	8	8' x 20"
73	EBB-222-02	PANEL	8	8' x 20"
74	EBB-222-02	PANEL	8	8' x 20"
75	EBB-222-02	PANEL	8	8' x 20"
76	EBB-222-02	PANEL	8	8' x 20"
77	EBB-222-02	PANEL	8	8' x 20"
78	EBB-222-02	PANEL	8	8' x 20"
79	EBB-222-02	PANEL	8	8' x 20"
80	EBB-222-02	PANEL	8	8' x 20"
81	EBB-222-02	PANEL	8	8' x 20"
82	EBB-222-02	PANEL	8	8' x 20"
83	EBB-222-02	PANEL	8	8' x 20"
84	EBB-222-02	PANEL	8	8' x 20"
85	EBB-222-02	PANEL	8	8' x 20"
86	EBB-222-02	PANEL	8	8' x 20"
87	EBB-222-02	PANEL	8	8' x 20"
88	EBB-222-02	PANEL	8	8' x 20"
89	EBB-222-02	PANEL	8	8' x 20"
90	EBB-222-02	PANEL	8	8' x 20"
91	EBB-222-02	PANEL	8	8' x 20"
92	EBB-222-02	PANEL	8	8' x 20"
93	EBB-222-02	PANEL	8	8' x 20"
94	EBB-222-02	PANEL	8	8' x 20"
95	EBB-222-02	PANEL	8	8' x 20"
96	EBB-222-02	PANEL	8	8' x 20"
97	EBB-222-02	PANEL	8	8' x 20"
98	EBB-222-02	PANEL	8	8' x 20"
99	EBB-222-02	PANEL	8	8' x 20"
100	EBB-222-02	PANEL	8	8' x 20"

- NOTES:
1. SHOWN WITH OPTIONAL ELT COVER INSTALLATION. SEE EBB-1-ELT SHT 1 OF 1.
 2. REMOVE EXISTING REAR WALL ASSEMBLY AT FUSELAGE STATION 300(350). ON CESSNA MODEL 208 SEPARATE HEADLINER FROM THIS REAR WALL. REMOVE TRIM PANELS FROM WINDOWS.
 3. REMOVE STRAP ASSEMBLIES, P/N 2615085-1 ON 208A AND 208B. DRILL OUT FOUR RIVETS FROM CROSS SUPPORT CESSNA P/N 2615031-6. REMOVE SUPPORT FROM BULKHEAD.

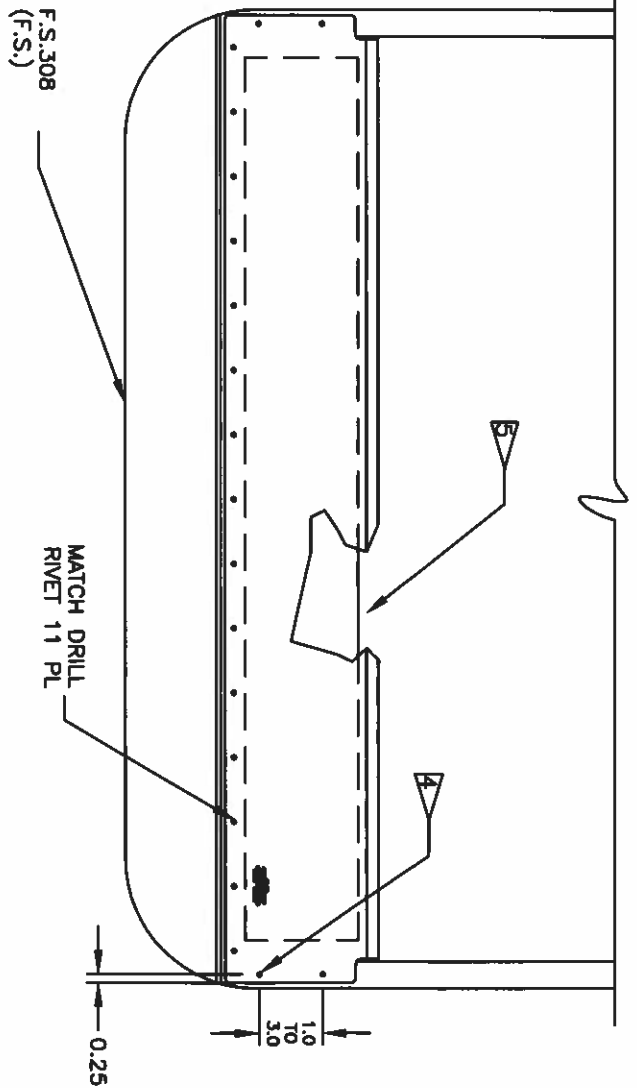
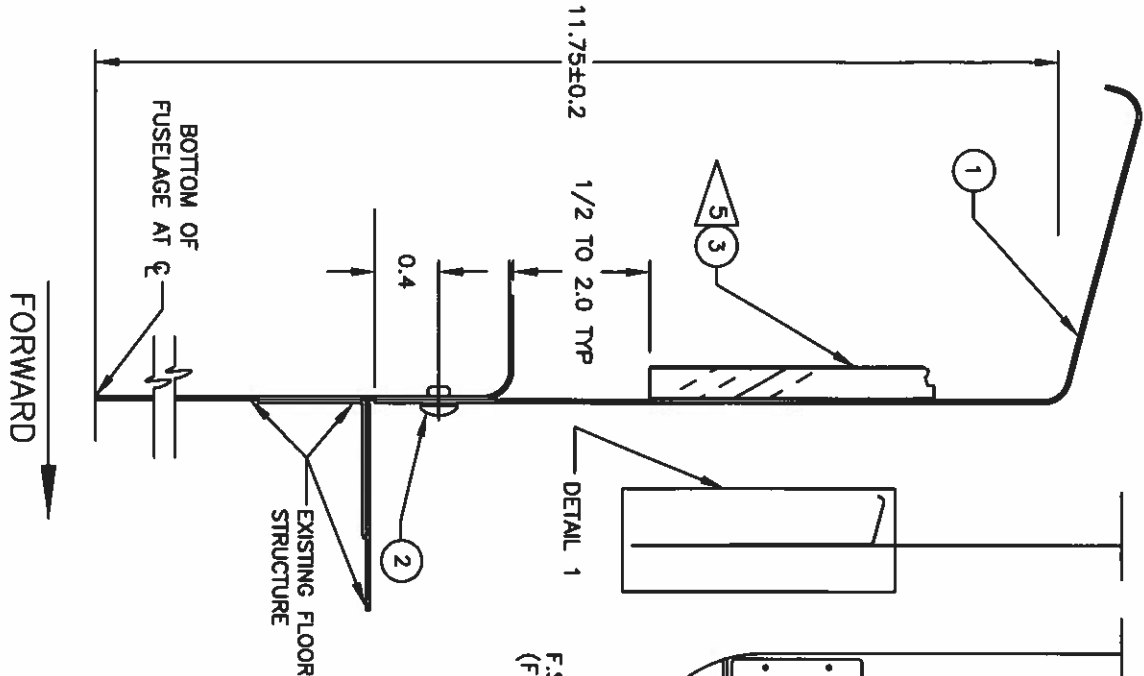
AERO TWIN, INC.
2400 WHEEL FIELD DRIVE ANCHORAGE AK 99501

EXPLODED VIEW
EBB-200

DATE: 10/11/01
DRAWN BY: J. L. LONKIN
CHECKED BY: J. L. LONKIN
SCALE: 1/16" = 1"

REV. 1
REV. 2 OF 12

EBB-1



VIEW AFT: FORWARD PANEL (LOWER)

NOTES:

1. REMOVE EXISTING RIVETS AT F.S. 308 (356) WHICH INTERFERE WITH INSTALLATION OF FORWARD PANEL, ITEM-1.
2. REMOVE THE OXYGEN CYLINDER IF INSTALLED. CAUTION: DEPRESSURIZE AND STORE PROPERLY.
3. INSTALL LOWER FORWARD PANEL P/N E88-102. LOCATE AND MATCH DRILL REMOVED RIVETS. REPLACE WITH RIVETS OF EQUAL OR GREATER STRENGTH. RIVET AT 1 TO 3 INCH INTERVALS ALONG SIDES AND BOTTOM OF PANEL. ENSURE MINIMUM EDGE DISTANCE OF 1/4 INCH.
4. ADD SOUND DEADENER TAPE TO REAR SURFACE OF LOWER PANEL.
5. SOUND DEADENER TAPE MAY HAVE ANY OF THE FOLLOWING PART NUMBERS:
2609010-6, Y370, 4014-12
- 6.

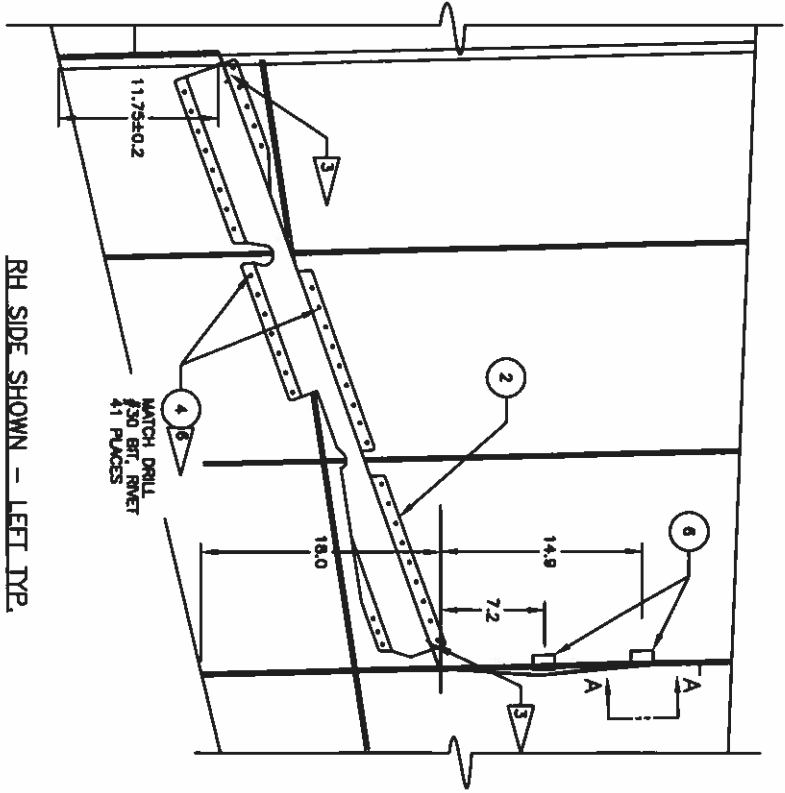
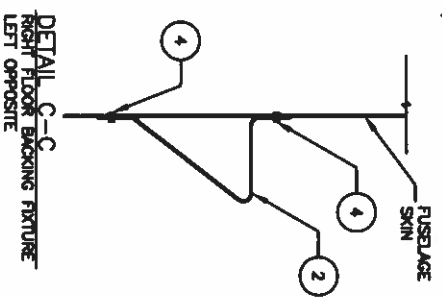
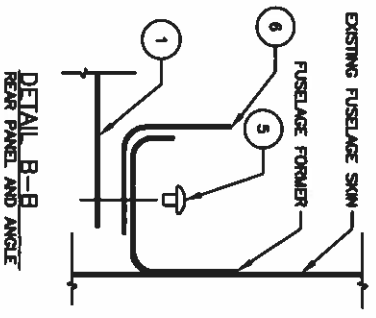
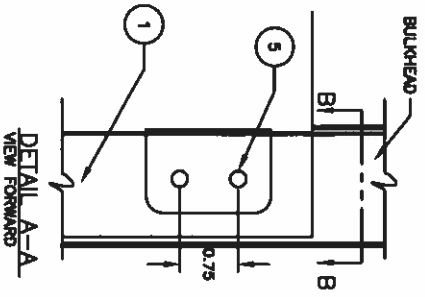
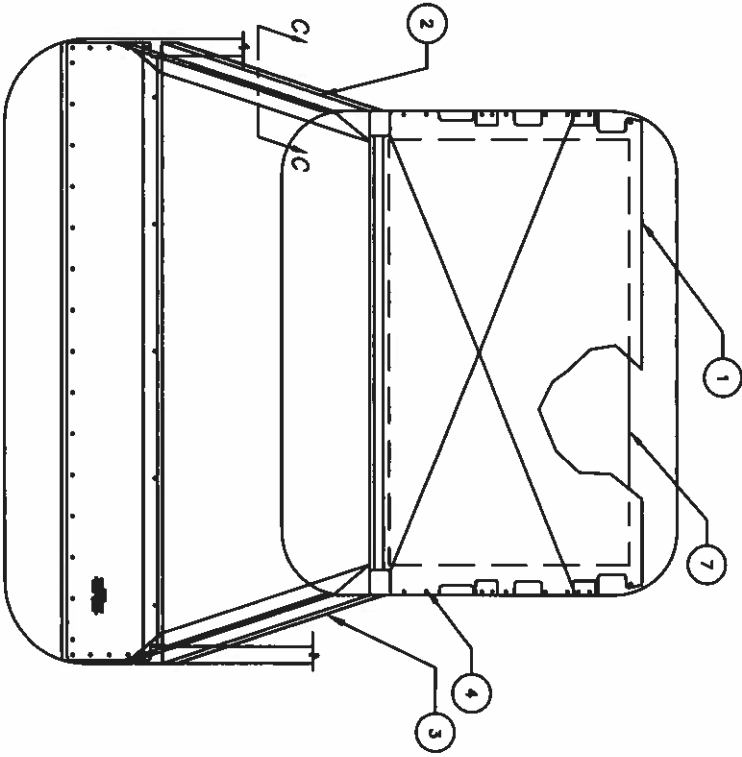
DETAIL 1

FORWARD PANEL

ARO TWIN, INC.
2407 BIRCH RD ONE WARREN MI 48091

REV	DATE	BY	CHKD	DESCRIPTION
1	10-13-81
2	11-13-81
3	12-13-81

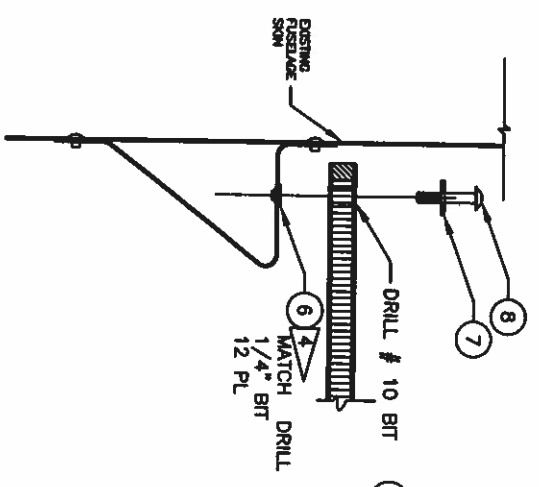
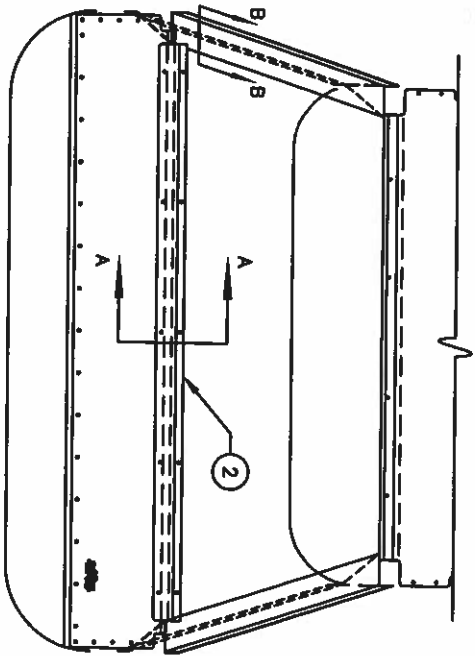
REV	QTY	PART NO.	DESCRIPTION	UNIT	QTY	REMARKS
1	1	EBB-102	FORWARD PANEL LOWER			
2	20	EBB-102	FORWARD PANEL LOWER			
3	1	EBB-102	FORWARD PANEL LOWER			



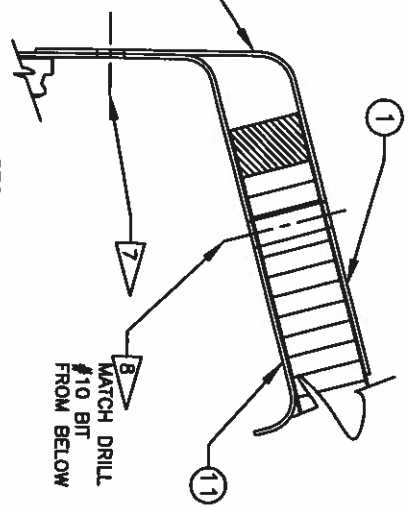
- NOTES**
1. INSTALL REAR PANEL, SOUND RESISTOR TUBE AND FOUR SIDE ANGLES (ITEM 1, 7 AND 8) THE REAR PANEL SHOULD BE POSITIONED TO THE CENTER LINE OF THE REAR ANGLE AND THE CENTER LINE OF THE SOUND RESISTOR TUBE SHOULD BE 2 1/2" TO 4 1/2" FROM THE CENTER LINE OF THE REAR ANGLE. THE REAR ANGLE SHOULD BE 70° FROM THE CENTER LINE OF THE REAR ANGLE. THE SOUND RESISTOR TUBE SHOULD BE 70° FROM THE CENTER LINE OF THE REAR ANGLE. THE REAR ANGLE SHOULD BE 70° FROM THE CENTER LINE OF THE REAR ANGLE. THE SOUND RESISTOR TUBE SHOULD BE 70° FROM THE CENTER LINE OF THE REAR ANGLE.
 2. DETAILS POINT AND LEFT FLOOR BACKING FITTURES 2 AND 3, THE ANGLED PLACES OF THE FLOOR BACKING FITTURES SHOULD BE 70° FROM THE CENTER LINE OF THE REAR ANGLE. THE REAR ANGLE SHOULD BE 70° FROM THE CENTER LINE OF THE REAR ANGLE. THE SOUND RESISTOR TUBE SHOULD BE 70° FROM THE CENTER LINE OF THE REAR ANGLE.
 3. THE REAR PANEL SHOULD BE 70° FROM THE CENTER LINE OF THE REAR ANGLE. THE SOUND RESISTOR TUBE SHOULD BE 70° FROM THE CENTER LINE OF THE REAR ANGLE.
 4. SOUND RESISTOR TUBE MAY HAVE ANY OF THE FOLLOWING PART NUMBERS: 2000010-4, 1200, 4014-12

ITEM	QTY	PART NO.	DESCRIPTION	MATERIAL	DIMENSION	PROVISIONS
1	1	EMB-100-A	REAR PANEL			
2	1	EMB-100-B	FLOOR BACKING FITTURE			
3	1	EMB-100-C	FLOOR BACKING FITTURE			
4	1	EMB-100-D	REAR ANGLE			
5	1	EMB-100-E	REAR ANGLE			
6	1	EMB-100-F	REAR ANGLE			
7	1	EMB-100-G	REAR ANGLE			
8	1	EMB-100-H	REAR ANGLE			

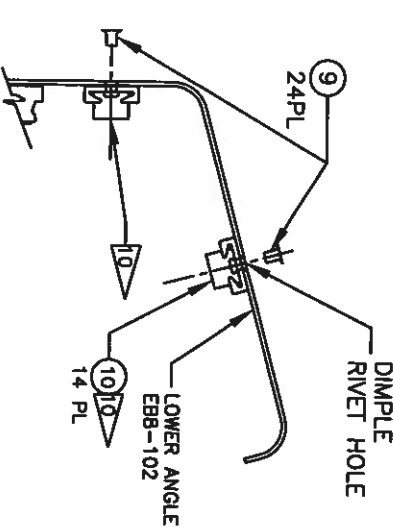
AERO TWIN, INC.
 1401 BIRCHFIELD DRIVE, ANDOVER, MA 0001
 REAR PANEL AND FLOOR SUPPORTS
 DRAWING NO. ATB8-1
 SCALE 1/8" = 1"



SECTION B-B: BACKING FIXTURE AND FLOOR ATTACHMENT AT SIDE VIEW LOOKING AFT



SEC A-A: STEP 1 LOWER FRONT ANGLE ATTACHMENT AT FRONT EDGE



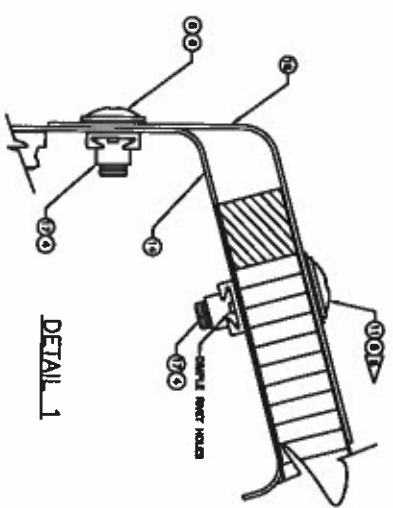
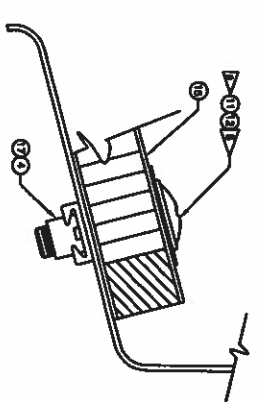
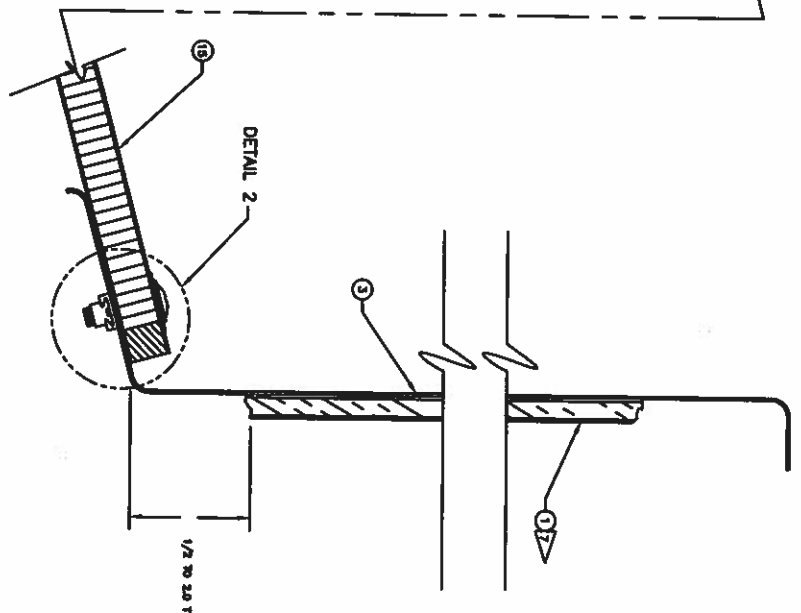
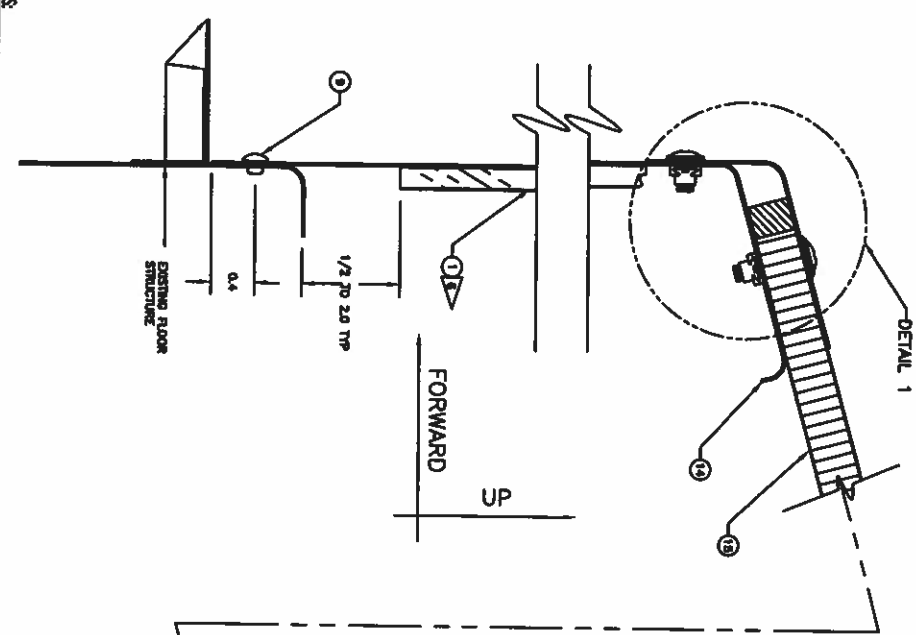
SECTION A-A: STEP 2 LOWER ANGLE EBB-102 NUT PLATE ATTACHMENT

- NOTES**
1. POSITION FLOOR PANEL ITEM-1, ON FRONT AND REAR ANGLES AND ON FLOOR BACKING FIXTURES.
 2. MATCH DRILL THROUGH EXISTING PILOT HOLES IN FLOOR PANEL, FRONT ANGLE, REAR ANGLE, AND SIDE BACKING FIXTURES USING A #10 BIT.
 3. REMOVE FLOOR PANEL.
 4. MATCH DRILL RIVET HOLES IN FLOOR BACKING FIXTURE ON BOTH RIGHT AND LEFT HAND SIDES WITH 1/4 INCH BIT. NOTCH TO MATCH RIVETS ITEM-6, AND REINSTALL RIVETS IN THESE LOCATIONS THROUGH FLOOR BACKING FIXTURES ONLY.
 5. TEMPORARILY REINSTALL FLOOR PANEL, FASTEN AT SIDES ONLY.
 6. POSITION FORWARD ANGLE ITEM-2, CENTERED ON FLOOR PANEL. PRE-DRILLED HOLES SHOULD BE ON VERTICAL SURFACE OF THE FORWARD ANGLE. MATCH DRILL AND FASTEN WITH CLEED FASTENERS.
 7. MATCH DRILL USING #10 BIT, THE FIVE SCREW HOLES ON THE SLANTED SURFACE OF THE FORWARD ANGLE AND FLOOR PANEL USING A HOLE FINDER TO LOCATE HOLES IN FLOOR PANEL AND LOWER ANGLE AND FLOOR PANEL USING A HOLE FINDER IS NOT AVAILABLE.
 8. REMOVE CLEED FASTENERS FROM THESE HOLES.
 9. REMOVE FORWARD ANGLE AND FLOOR PANEL BEHIND THE VERTICAL AND ANGLED SURFACES OF THE FORWARD ANGLE ITEM-2.
 10. INSTALL NUT PLATES AT THE LOWER SURFACE OF THE REAR PANEL ATTACH FLANGE. SEE DETAILS ON SHEET 6 OF 12.
 11. PERMANENTLY REINSTALL FLOOR PANEL AND FORWARD ANGLE FOLLOWING DETAILS ON SHEET 6 OF 12.

ITEM	QTY	PART NO.	DESCRIPTION	REVISION	DATE	BY
1	1	EBB-102	FORWARD ANGLE			
2	1	EBB-115	FORWARD ANGLE			
3	1	EBB-2010	FLOOR PANEL			
4	1	EBB-114	SOCK ANGLE			
5	2	EBB-114	SOCK ANGLE			
6	12	AW270-3	RIVET			
7	12	AW270-3	RIVET			
8	12	AW270-3	RIVET			
9	20	AW270-3	RIVET			
10	14	AW270-3	RIVET			
11	1	EBB-102	FORWARD ANGLE			
12	1	EBB-115	FORWARD ANGLE			
13	1	EBB-2010	FLOOR PANEL			
14	1	EBB-114	SOCK ANGLE			
15	1	EBB-114	SOCK ANGLE			
16	1	EBB-114	SOCK ANGLE			
17	1	EBB-114	SOCK ANGLE			
18	1	EBB-114	SOCK ANGLE			
19	1	EBB-114	SOCK ANGLE			
20	1	EBB-114	SOCK ANGLE			

AERO TWIN, INC.
 1400 W. 10TH AVENUE, SUITE 100
 DENVER, CO 80202
 TEL: 303.733.1111 FAX: 303.733.1112
 WWW.AEROTWIN.COM

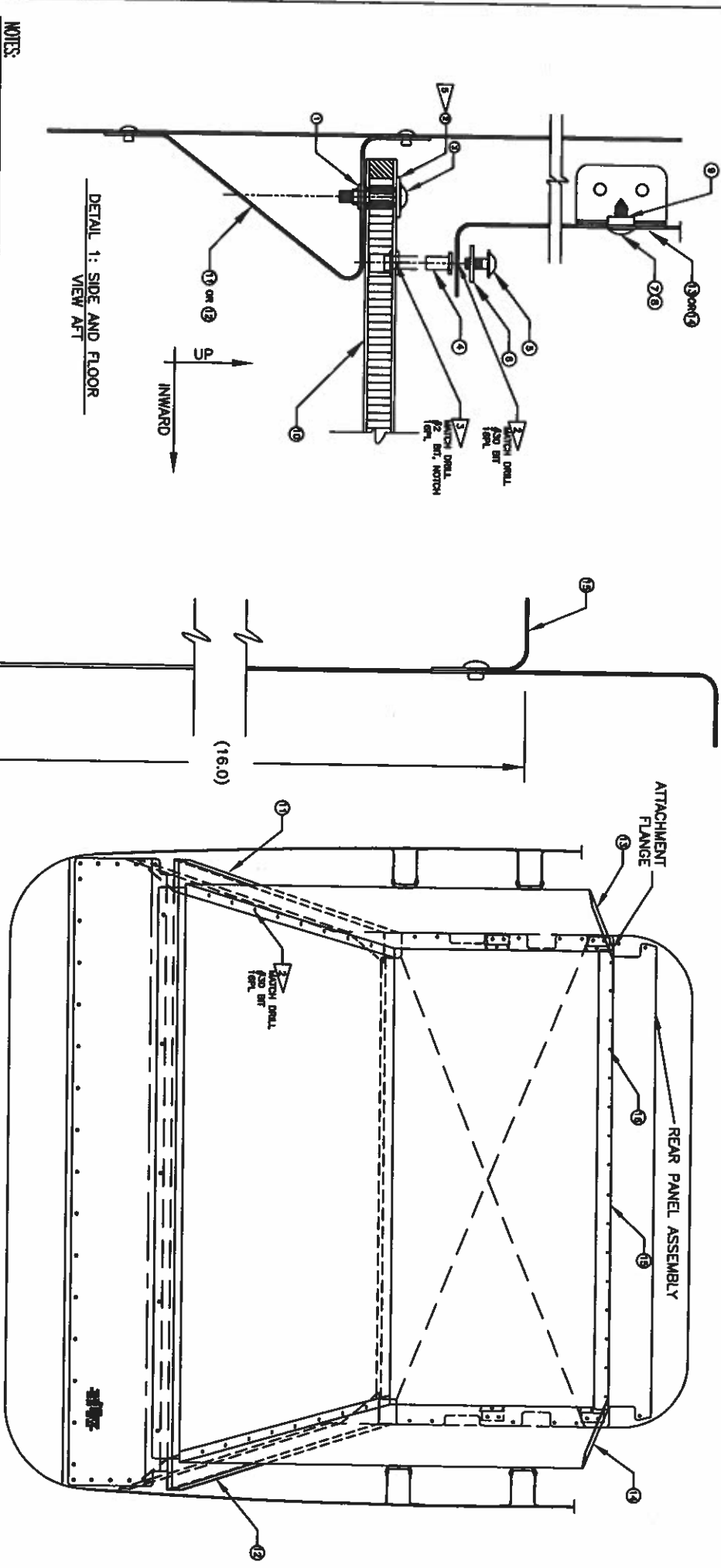
1. WHERE IT IS IMPOSSIBLE TO BUCK RIVETS, USE CHERRY MAX RIVETS (10), APPX. 2 REQUIRED. DRILL RIVET HOLES #27 BIT.
 2. FOR (9) RIVETS DRILL #30 BIT.
 3. FOR (10) AND (17) RIVETS DRILL HOLES #40 BIT. COUNTERSINK 100° AS REQUIRED.
 4. RIVET (9) NUT PLATES TO (14) PANEL ONLY. DO NOT RIVET TO (18) ANGLE.
 5. DRILL SCREW HOLES #10 BIT.
- FIT, CUT AND INSTALL SOUND DEADENER TAPE TO THE REAR SURFACE OF THE FORWARD PANEL AND TO THE REAR SURFACE OF THE REAR PANEL.
 SOUND DEADENER TAPE MAY HAVE ANY OF THE FOLLOWING PART NUMBERS: 2809010-6, Y370, 4014-12.



ITEM	QTY	PART NO.	DESCRIPTION	MATERIAL	COMPOSITION	SYMBOLIZATION
18	1	EB8-115	ANGLE FORWARD			
17	1/4	EB8-115	NUTS			
16	1/4	EB8-115	FLOOR PANEL			
15	1	EB8-102	FORWARD PANEL			
14	1	EB8-102	NUT PLATE			
13	1	EB8-102	WASHER			
12	1	AL-1000	BLIND RIVET			
11	2	EB8-102	SCREW			
10	2	EB8-102	BLIND RIVET			
9	1/2	EB8-102	SCREW			
8	1	EB8-102	NUT			
7	1/2	EB8-102	SCREW			
6	4	EB8-102	WASHER			
5	1	EB8-102	WASHER			
4	2	EB8-102	NUT PLATE			
3	1	EB8-102	REAR PANEL			
2	4	EB8-102	SCREW			
1	1/4	EB8-102	BLIND RIVET			

QUANTITIES LISTED ARE FOR ONE (1) COMPLETE EB8-200 KIT.
 DRAWING NO. EB8-1
 TITLE: FLOOR PANEL DETAILS
 DATE: 10/1/78
 DESIGNED BY: [Name]
 CHECKED BY: [Name]
 APPROVED BY: [Name]
 SCALE: 1/2" = 1'-0"

AERO TWIN, INC.
 2411 HERBELL FIELD DRIVE, ANCHORAGE, AK 99501
 PHONE: (907) 562-1111
 TELETYPE: (907) 562-1112
 TELEX: (907) 562-1111
 FAX: (907) 562-1113

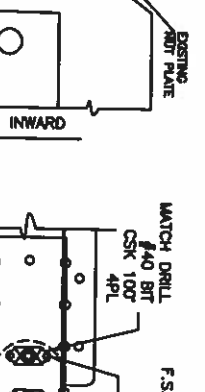
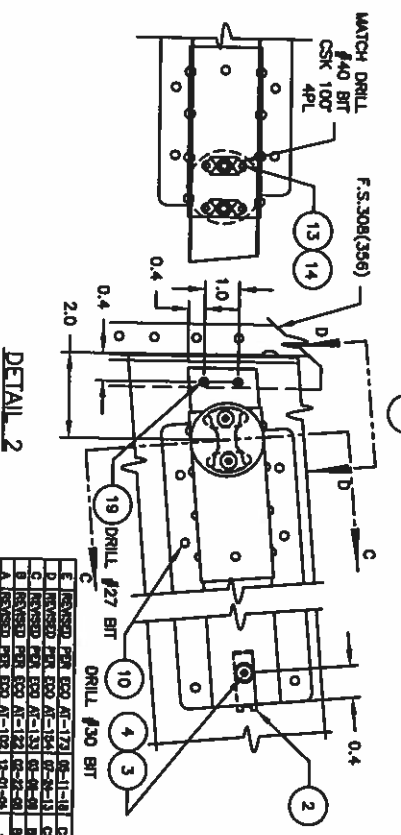
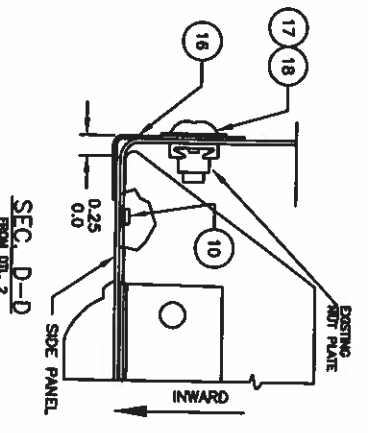
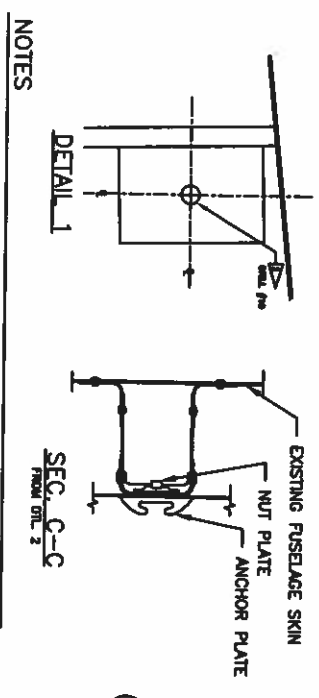
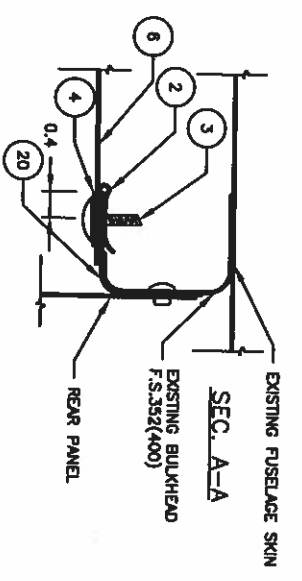
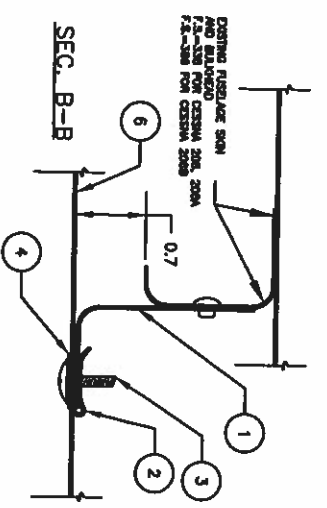
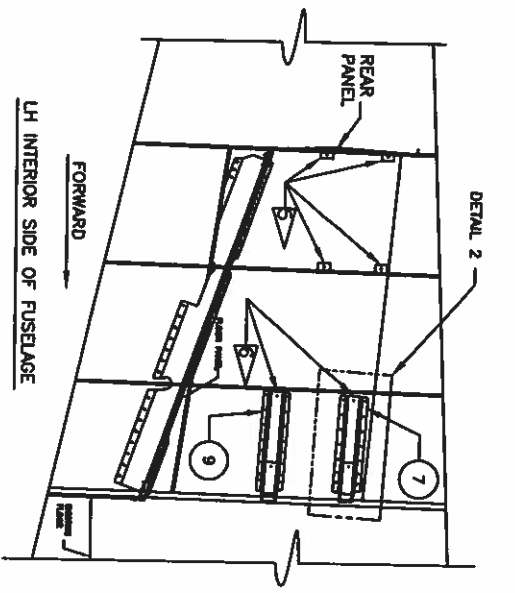
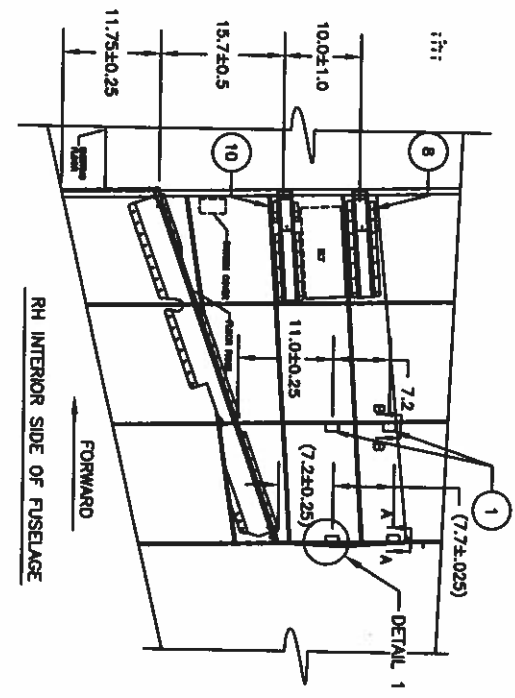


- NOTES:
- LOCATE SIDE PANELS, ITEMS 13 AND 14.
 - MATCH DRILL HOLES ALONG BOTTOM EDGE THROUGH FLANGE AND TOP SURFACE ONLY OF FLOOR PANEL.
 - MATCH DRILL FLOOR PANEL ONLY AND NOTCH FOR RIVNUTS.
 - INSTALL RIVNUTS. REINSTALL SIDE PANELS.

QUANTITIES LISTED ARE FOR ONE (1) COMPLETE EBB-200 KIT.

ITEM NO.	DESCRIPTION	QTY	REVISION	DATE
1	1/2" ALUMINUM RIVNUTS	12		
2	1/2" ALUMINUM RIVNUTS	12		
3	1/2" ALUMINUM RIVNUTS	12		
4	1/2" ALUMINUM RIVNUTS	12		
5	1/2" ALUMINUM RIVNUTS	12		
6	1/2" ALUMINUM RIVNUTS	12		
7	1/2" ALUMINUM RIVNUTS	12		
8	1/2" ALUMINUM RIVNUTS	12		
9	1/2" ALUMINUM RIVNUTS	12		
10	1/2" ALUMINUM RIVNUTS	12		
11	1/2" ALUMINUM RIVNUTS	12		
12	1/2" ALUMINUM RIVNUTS	12		
13	1/2" ALUMINUM RIVNUTS	12		
14	1/2" ALUMINUM RIVNUTS	12		
15	1/2" ALUMINUM RIVNUTS	12		
16	1/2" ALUMINUM RIVNUTS	12		
17	1/2" ALUMINUM RIVNUTS	12		
18	1/2" ALUMINUM RIVNUTS	12		

1. SIDE PANEL AND FLOOR SUPPORTS
 2. AERO TWIN, INC.
 3. 2400 WOODFIELD DRIVE, AMMONIA, NC 28001
 4. DRAWN BY: [Name]
 5. CHECKED BY: [Name]
 6. DATE: [Date]
 7. SCALE: [Scale]
 8. SHEET NO. 13 OF 13
 9. EBB-1



SEC. C-C FROM DET. 2

SEC. D-D FROM DET. 2

SEC. A-A

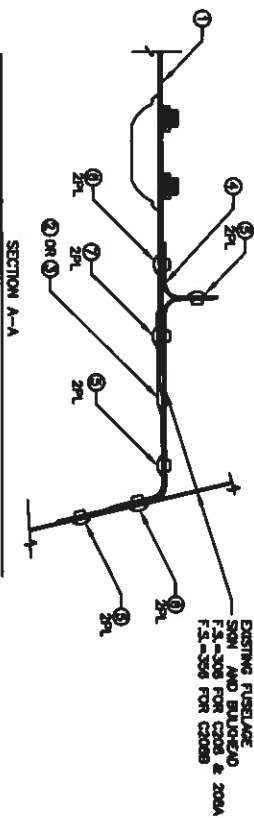
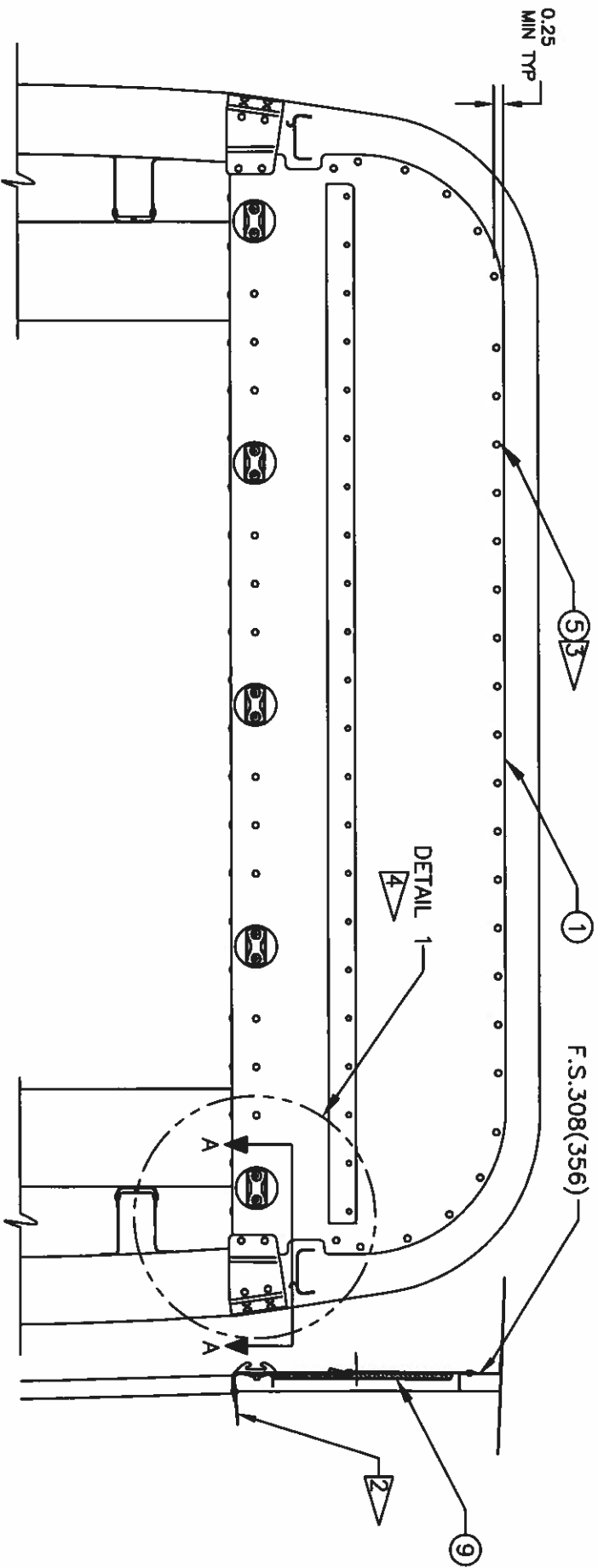
SEC. B-B

NOTES

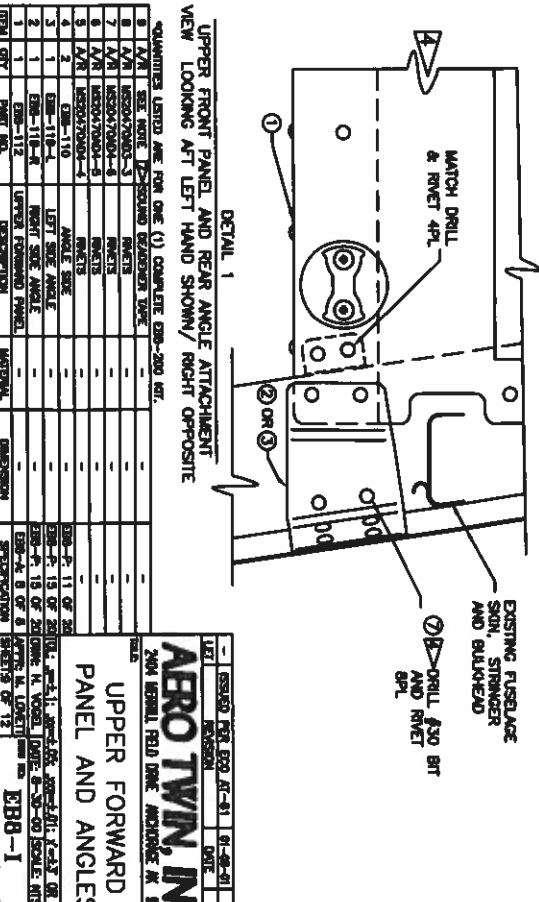
1. SHOWN WITH OPTIONAL BT CIRCUIT LOCATION.
2. INSTALL FOUR SIDE ANCHORS PER P/N EBB-104. TEMPORARILY INSTALL FROM ANCHORS. PROVIDE USING CLEED FASTENERS. SEE INSTALL INSTRUCTIONS FOR EXACT POSITIONING.
3. INSTALL SIDE PANELS USING DETAIL 1, SHEET 7 OF 12.
4. DRILL THROUGH SIDE PANELS AT REAR EDGE OF EACH ANCHOR P/N EBB-114 AND EBB-108.
5. DRILL #27 BIT. SIDE PANELS AT REAR EDGE OF EACH ANCHOR P/N EBB-114 AND EBB-108.
6. MATCH DRILL TWO EXISTING HOLES FOR ANCHOR PLATE AS SHOWN ON DETAIL 2.
7. TEMPORARILY REMOVE SIDE PANELS.
8. REMOVE FOUR BACKING FEATURES AND INSTALL 2 NUT PLATES FOR EACH ANCHOR PLATE TO BACK SIDE OF FEATURE (DETAIL 2).
9. INSTALL BACKING FEATURES. INSET TO FUSELAGE SKIN AND AT TWO POINTS ON BALDHEAD (SEC B-B).
10. POSITION THE UPPER CENTER CROSS SUPPORT PER DETAIL 2 SHEET 11 OF 12.
11. INSTALL SIDE PANEL AT ALL ATTACHMENT POINTS USING THROUGH CLIPS.
12. INSTALL ANCHOR PLATES.
13. ANCHOR PLATES MAY HAVE ANY OF THE FOLLOWING PART NUMBERS: 2000-02 OR 4000-11.

QTY	PART NO.	DESCRIPTION	MATERIAL	DIMENSION	SPC/OPERATION
10	1	EBB-125-3	U-SHANKS	EBB-4, 8 OF 8	EBB-4, 8 OF 8
8	1	EBB-125-4	U-SHANKS	EBB-4, 8 OF 8	EBB-4, 8 OF 8
7	1	EBB-121-4	U-SHANKS	EBB-4, 7 OF 8	EBB-4, 7 OF 8
6	1	EBB-108-4	U-SHANKS	EBB-4, 6 OF 8	EBB-4, 6 OF 8
5	1	EBB-108-1	U-SHANKS	EBB-4, 5 OF 8	EBB-4, 5 OF 8
4	1	EBB-108-2	U-SHANKS	EBB-4, 4 OF 8	EBB-4, 4 OF 8
3	1	EBB-108-3	U-SHANKS	EBB-4, 3 OF 8	EBB-4, 3 OF 8
2	1	EBB-108-5	U-SHANKS	EBB-4, 2 OF 8	EBB-4, 2 OF 8
1	1	EBB-108-6	U-SHANKS	EBB-4, 1 OF 8	EBB-4, 1 OF 8
10	1	EBB-108-7	U-SHANKS	EBB-4, 10 OF 8	EBB-4, 10 OF 8
8	1	EBB-108-8	U-SHANKS	EBB-4, 8 OF 8	EBB-4, 8 OF 8
7	1	EBB-108-9	U-SHANKS	EBB-4, 7 OF 8	EBB-4, 7 OF 8
6	1	EBB-108-10	U-SHANKS	EBB-4, 6 OF 8	EBB-4, 6 OF 8
5	1	EBB-108-11	U-SHANKS	EBB-4, 5 OF 8	EBB-4, 5 OF 8
4	1	EBB-108-12	U-SHANKS	EBB-4, 4 OF 8	EBB-4, 4 OF 8
3	1	EBB-108-13	U-SHANKS	EBB-4, 3 OF 8	EBB-4, 3 OF 8
2	1	EBB-108-14	U-SHANKS	EBB-4, 2 OF 8	EBB-4, 2 OF 8
1	1	EBB-108-15	U-SHANKS	EBB-4, 1 OF 8	EBB-4, 1 OF 8

AERO TWIN, INC.
 2400 METCAL FIELD DRIVE, ANDOVER, MA 00001
 SIDE PANEL INSTALLATION
 DRAWN: K. DAVLOR DATE: 08-30-00 SCALE: NTS
 CHECKED: M. LORRETT DATE: 08-30-00
 SHEETS OF 13 EBB-1



- NOTES
- REMOVE AND DESTROY EXISTING REAR PANELS WHICH PANEL P/N ESB-112, AND REPLACE WITH FLUSH HEAD RIVETS OF EQUAL OR GREATER STRENGTH.
 - INSTALL UPPER FORWARD PANEL TO THE FLANGE RIBS WITH HOLES FOR THE EXISTING 28 IN. EDGE DISTANCE AND 1 TO 3 INCH RIB SPACING.
 - INSTALL TIE RODS 2, 3 AND 4. DRILL HOLES TO ALLOW TIE RODS TO PASS ALL EXISTING TIE RODS TO ALLOW LEFT AND RIGHT SIDE ATTACHMENT TO BE USED.
 - ATTACH ANGLES ITEM 4 TO BULKHEAD AND FRONT UPPER PANEL, RIVET IN PLACE.
 - TIE CUT AND DESTROY EXISTING DEVIANT TYPE TO REAR SURFACE OF UPPER FRONT PANEL P/N ESB-112, 20900110-4 OR Y201 OR 4014-12.



QUANTITIES LISTED ARE FOR ONE (1) COMPLETE ESB-200 KIT.

ITEM	QTY	DESCRIPTION	UNIT	REMARKS
1	1	UPPER FORWARD PANEL		
2	1	LEFT SIDE ANGLE		
3	1	RIGHT SIDE ANGLE		
4	2	ANGLE RODS		
5	2	ESB-110-4		
6	2	ESB-110-4		
7	1	ESB-112		
8	1	ESB-112		
9	1	ESB-112		

UPPER FORWARD PANEL AND ANGLES

AROTWIN, INC.

2400 BERNAL RD. BERKELEY, CA 94701

TEL: 415-863-2200 FAX: 415-863-2201

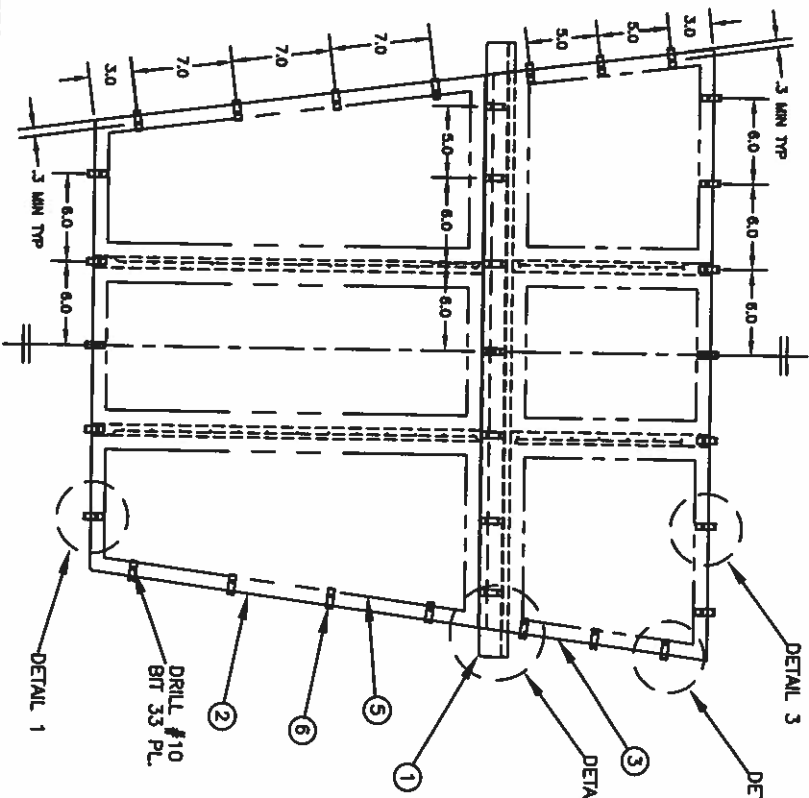
WWW.AROTWIN.COM

DATE: 01-23-01

REV: 1

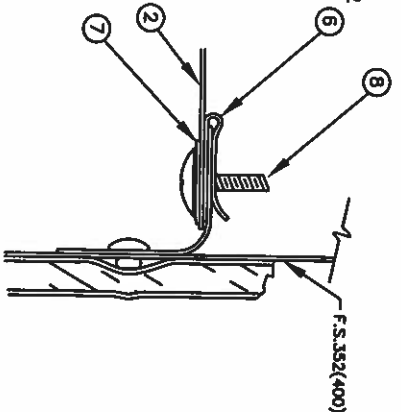
ESB-1

FORWARD

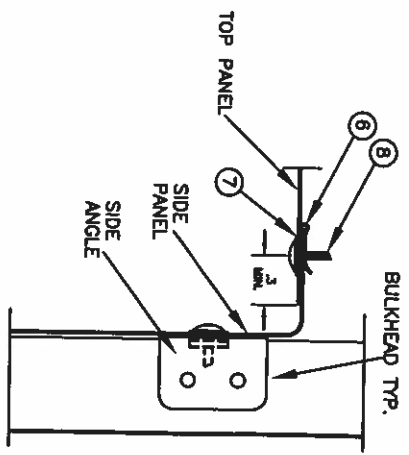


NOTES

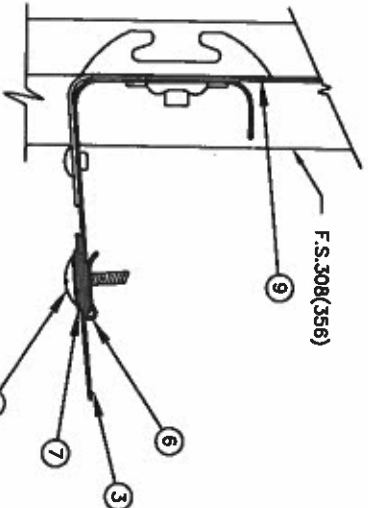
1. TRIM TOP REAR PANEL TO FIT BETWEEN UPPER ATTACHMENT FLANGES.
2. DRILL HOLES AS SPECIFIED IN DRAWING AND SPACING OF 3" FROM EDGE.
3. HOLE PLACEMENT IS SYMMETRICAL ABOUT CENTER OF 3" FROM EDGE.
4. CUT AND APPLY SOUND DEADENER TAPE (ITEM-5) TO FIT BETWEEN STRIPPERS.
5. DRILL HOLES THROUGH UPPER SIDE PANEL FLANGES AND UPPER CROSS SUPPORT FLANGE. WATCH DRILL FROM BELOW. AT SCREW HOLE LOCATIONS OF REAR FLANGE, PLACE THE SOUND DEADENER TAPE (ITEM-5) AT SCREW HOLE LOCATIONS OF REAR FLANGE.
6. DRILL HOLES THROUGH UPPER ATTACHMENT FLANGES.
7. DRILL HOLES AS SPECIFIED, SPACING A MINIMUM OF 3" FROM EDGE. HOLE PLACEMENT IS SYMMETRICAL ABOUT CENTERLINE.
8. CUT AND APPLY SOUND DEADENER TAPE TO FIT BETWEEN STRIPPERS.
9. DRILL HOLES THROUGH LOWER UPPER SIDE PANEL FLANGES AND UPPER FRONT PANEL FLANGE. WATCH DRILL FROM BELOW.
10. DRILL HOLES THROUGH LOWER CROSS SUPPORT FLANGES.
11. DRILL THROUGH CLIPS AS IN HOLE LOCATIONS OF REAR AND LH SIDE PANEL FLANGES AS IN HOLE LOCATIONS OF RH FORWARD CROSS SUPPORT ON THE FRONT PANEL AND CENTER CROSS SUPPORT ITEM 1.
12. REINSTALL AND SERVICE OXYGEN BOTTLES.
13. REINSTALL TOP FORWARD PANEL ITEM 3.
14. REINSTALL TOP REAR PANEL ITEM 2.
15. SOUND DEADENER TAPE MAY HAVE ANY OF THE FOLLOWING P/N: 2000010-4, 1370, 4014-12



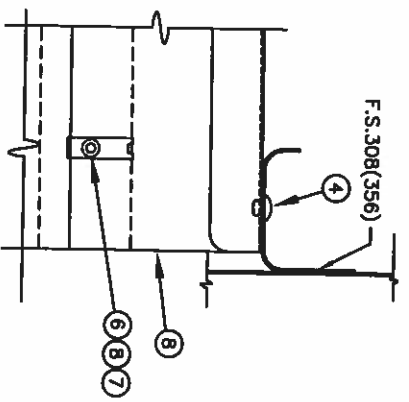
DETAIL 1: END VIEW-REAR FLANGE ATTACHMENT (TYP)



DETAIL 2: TOP PANEL ATTACHMENT (TYP)



DETAIL 3: FRONT PANEL ATTACHMENT (TYP)



DETAIL 4: TOP VIEW-CROSS SUPPORT ATTACHMENT

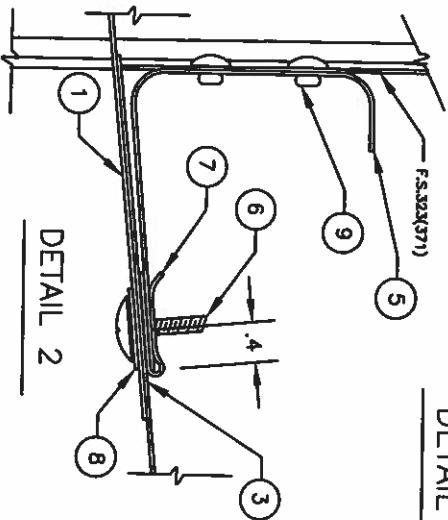
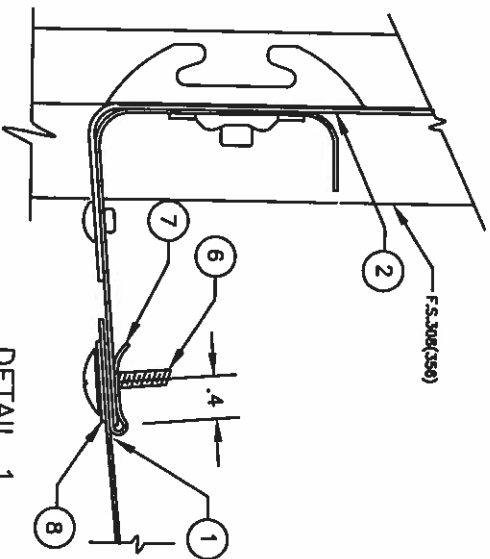
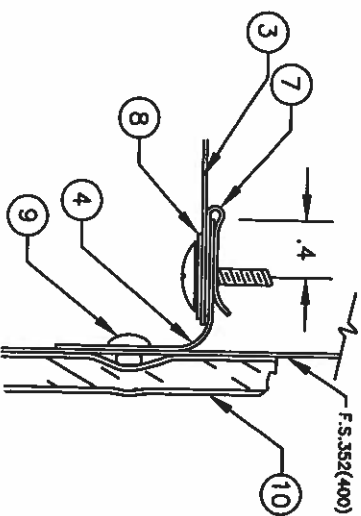
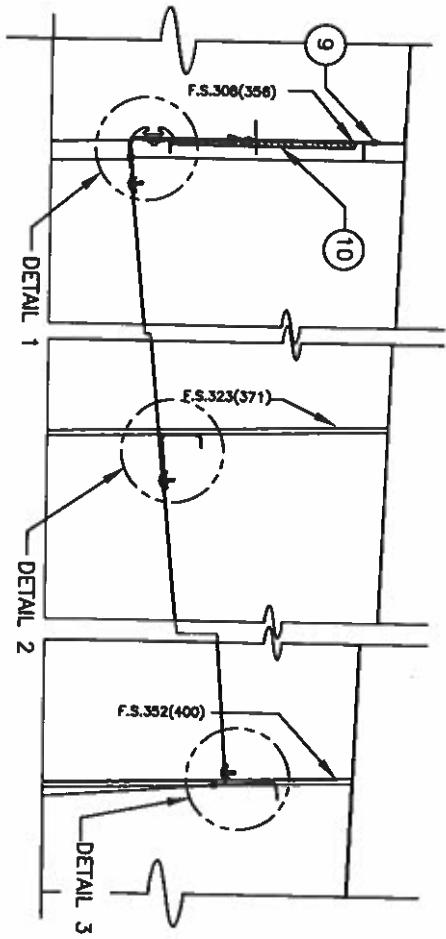
QUANTITIES SHOWN ARE FOR ONE (1) COMPLETE EBB-200 KIT.

ITEM	DESCRIPTION	QTY	REMARKS
1	EBB-112 FORWARD PANEL	1	
2	EBB-113 REAR PANEL	1	
3	EBB-114 TOP FORWARD PANEL	1	
4	EBB-115 TOP REAR PANEL	1	
5	EBB-116 CROSS SUPPORT	1	
6	EBB-117 UPPER SIDE PANEL FLANGE	2	
7	EBB-118 LOWER SIDE PANEL FLANGE	2	
8	EBB-119 UPPER ATTACHMENT FLANGE	2	
9	EBB-120 LOWER ATTACHMENT FLANGE	2	

AERO TWIN, INC.
 1400 WOODRIDGE BLVD
 WOODRIDGE, ILL. 60519

TOP PANEL
 INSTALLATION

REV. 10/78
 DATE: 10/78
 BY: J. L. WILSON
 CHECKED: J. L. WILSON
 APPROVED: J. L. WILSON
 PART NO. EBB-1



DETAIL 3

DETAIL 1

DETAIL 2

NOTES

1 SOUND DEADENER TAPE MAY HAVE ANY OF THE FOLLOWING PART NUMBERS: 2609010-6, Y370, 4014-12

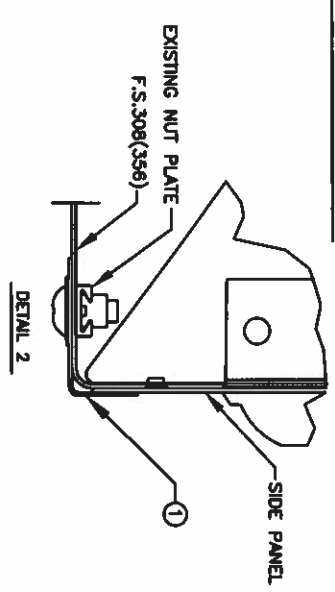
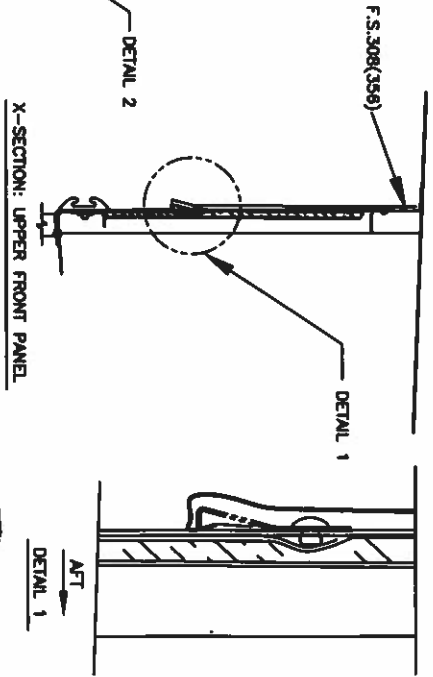
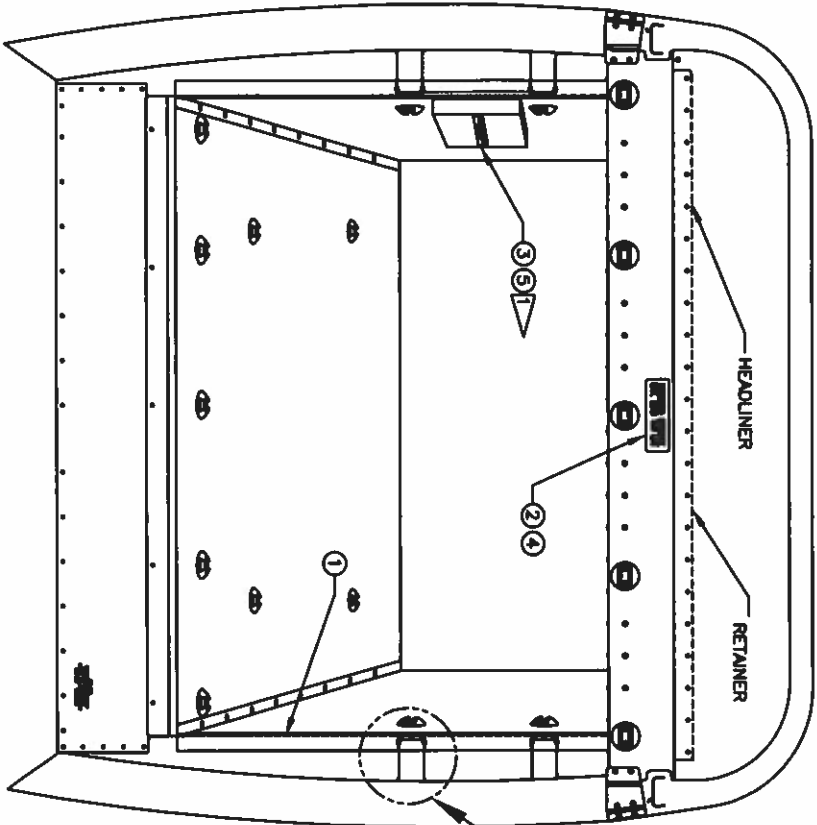
*QUANTITIES SHOWN ARE FOR ONE (1) COMPLETE EBB-300 KIT.

QTY	PART NO.	DESCRIPTION	UNIT
10	1	TOP PANEL (FRONT)	EA
10	2	TOP PANEL (REAR)	EA
10	3	TOP PANEL (SIDE)	EA
10	4	TOP PANEL (BOTTOM)	EA
10	5	TOP PANEL (CORNER)	EA
10	6	TOP PANEL (TRIM)	EA
10	7	TOP PANEL (CLIP)	EA
10	8	TOP PANEL (SCREW)	EA
10	9	TOP PANEL (WASHER)	EA
10	10	TOP PANEL (NUT)	EA
10	11	TOP PANEL (SPACER)	EA
10	12	TOP PANEL (GASKET)	EA
10	13	TOP PANEL (ADHESIVE)	EA
10	14	TOP PANEL (SUPPORT)	EA
10	15	TOP PANEL (REINFORCING)	EA
10	16	TOP PANEL (FINISH)	EA
10	17	TOP PANEL (PROTECTIVE)	EA
10	18	TOP PANEL (CLEANING)	EA
10	19	TOP PANEL (MAINTENANCE)	EA
10	20	TOP PANEL (REPAIR)	EA
10	21	TOP PANEL (REPLACEMENT)	EA
10	22	TOP PANEL (DISMANTLING)	EA
10	23	TOP PANEL (REASSEMBLY)	EA
10	24	TOP PANEL (INSPECTION)	EA
10	25	TOP PANEL (TESTING)	EA
10	26	TOP PANEL (CERTIFICATION)	EA
10	27	TOP PANEL (LABELING)	EA
10	28	TOP PANEL (ARCHIVING)	EA
10	29	TOP PANEL (RECYCLING)	EA
10	30	TOP PANEL (DISPOSAL)	EA

AERO TWIN, INC.
240 WEBER FIELD DRIVE, ANCHORAGE, AK 99501

FORWARD AND TOP PANEL DETAIL

REV. 10/88
DRAWN BY: J. L. DUNN
CHECKED BY: J. L. DUNN
DATE: 10/88
SCALE: 1:1
PART NO. EBB-1



NOTES

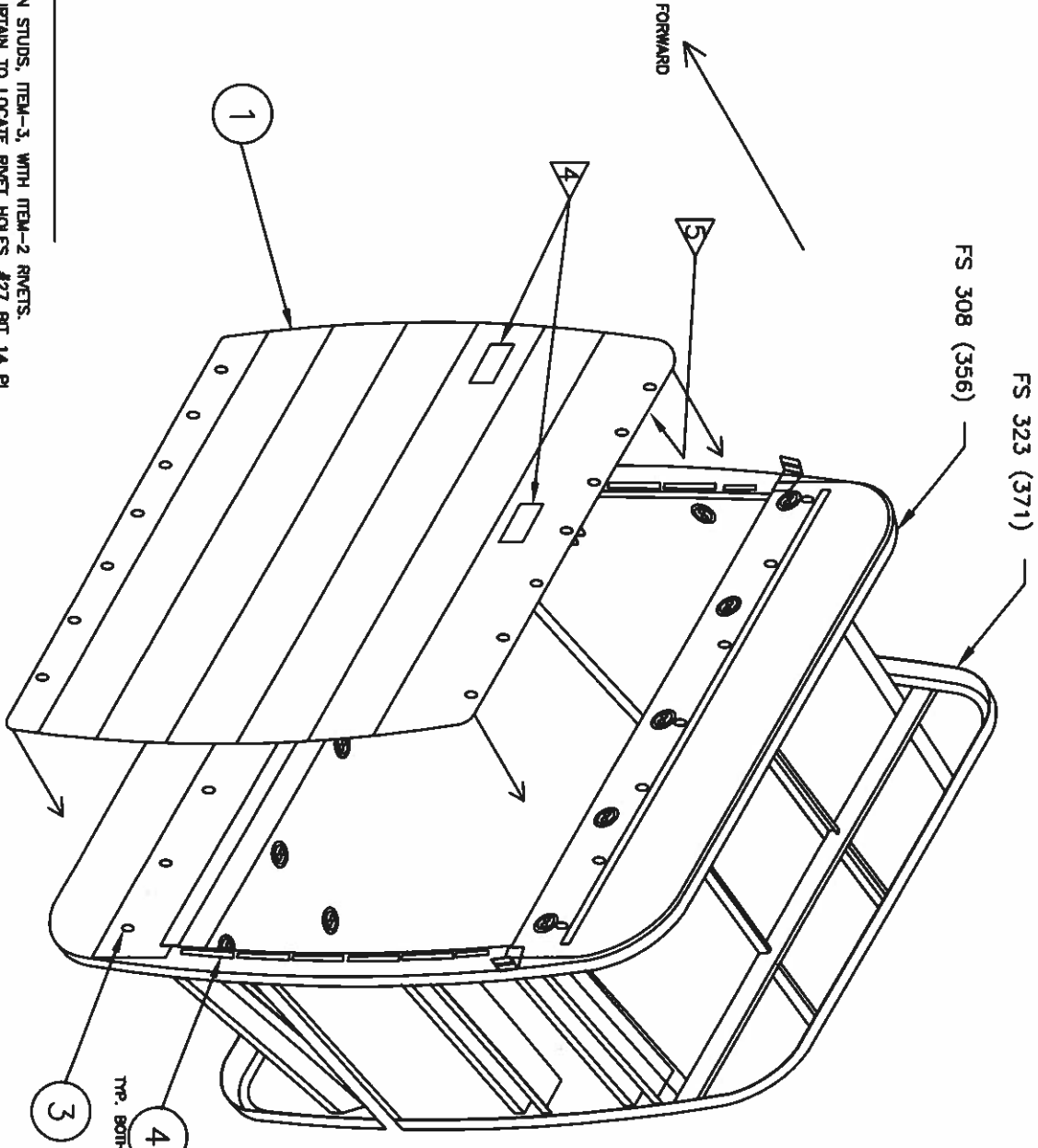
1. SHOWN WITH OPTIONAL EIT COVER INSTALLATION (SEE E88-1-EIT). IF SAID COVER IS INSTALLED, APPLY PLACARDS, OTHERWISE DISREGARD.
2. TUCK IN HEADLINER UNDER THE RETAINER ON THE FORWARD UPPER PANEL.
3. FIT AND INSTALL TWO TRIM ANGLES, ITEM 1, AT EACH SIDE OF THE FRONT BAGGAGE COMPARTMENT AT F.S. 308(356).
4. INSTALL SELF-STICKING CAPACITY PLACARD ITEM 2 OR 4 ON FORWARD UPPER PANEL.
5. INSTALL SELF-STICKING PLACARD ITEM 3 OR 5 ON EIT COVER LOCATED ON RIGHT SIDE OF BAGGAGE COMPARTMENT.
6. INSTALL PARTITION NET IF NEEDED FOLLOW INSTRUCTIONS ON SHEET 14 OF 13 INSTALLATION AND OPERATION MANUAL.
7. INSTALL CLAMP IF NEEDED, FOLLOW E88-1B3-1 INSTRUCTIONS ON SHEET 1 OF 1 WORK E88-1B3-1 OPTIONAL FLOOR ACCESS PANEL, NOT SHOWN FOR CLARITY.
8. SEE DWA, NO. E88-BA, SHEET 4 OF 4, LATEST APPROVED REVISION.

ITEM	QTY	PART NO.	DESCRIPTION	MATERIAL	DIMENSION	SPECIFICATION
1	1	E88-1B3-1	TRIM ANGLE	ALUMINUM	20" x 20" x .0625"	AS BUILT
2	1	E88-1B3-2	TRIM ANGLE	ALUMINUM	20" x 20" x .0625"	AS BUILT
3	1	E88-1B3-3	TRIM ANGLE	ALUMINUM	20" x 20" x .0625"	AS BUILT
4	1	E88-1B3-4	TRIM ANGLE	ALUMINUM	20" x 20" x .0625"	AS BUILT
5	1	E88-1B3-5	TRIM ANGLE	ALUMINUM	20" x 20" x .0625"	AS BUILT

REINFORCEMENT PLATES

AERO TWIN, INC.
 7403 BIRCH TRAIL DRIVE, MCKENZIE, PA 15051
 TEL: 717-353-2200 FAX: 717-353-2201
 WWW.AEROTWIN.COM

REV	DATE	DESCRIPTION	BY	CHK
1	08-23-01	ISSUED FOR E88-1B3-1
2	08-23-01	ISSUED FOR E88-1B3-2
3	08-23-01	ISSUED FOR E88-1B3-3
4	08-23-01	ISSUED FOR E88-1B3-4
5	08-23-01	ISSUED FOR E88-1B3-5



NOTES

1. SECURE BUTTON STUDS, ITEM-3, WITH ITEM-2 RIVETS. USE ITEM-1 CURTAIN TO LOCATE RIVET HOLES, #27 BIT 14 PL. FIT, CUT, AND ATTACH ITEM-4 VELCRO TAPE ALONG SIDES.
2. REMOVE HINGE PIN FROM EJT COVER, ITEM 5, CENTER HINGE ENSURE PLACARD STAMPS ARE AS SHOWN.
3. ROLL-UP STRAP LOCATED ON REAR SIDE OF CURTAIN.

ITEM	QTY	PART NO.	DESCRIPTION	UNIT	REVISION
1	1	7212-1	VELCRO TAPE	-	-
2	14	AN27-8	BUTTON STUDS	-	-
3	14	OS2024-4	BLIND RIVETS	-	-
4	1	SEM-183	CURTAIN	-	-
5	1	SEM-183	CURTAIN	-	-

AERO TWIN, INC.
 CURTAIN
 INSTALLATION

ISSUED FOR: ESD AT-01 01-08-01
 REVISION: DATE: N/A
 DRAWN BY: J. J. J. DATE: 8-20-00 SCALE: N/A
 CHECKED BY: J. J. J. DATE: 8-20-00 SCALE: N/A
 SHEET 1 OF 1 ETR8-193-1