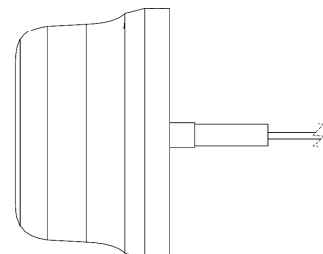
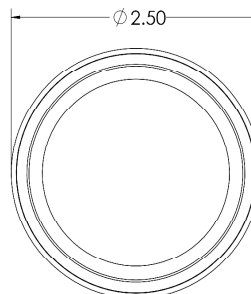
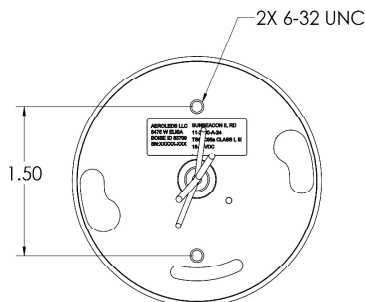
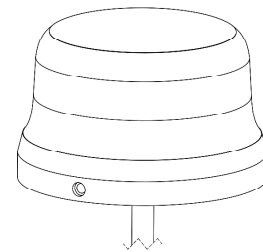
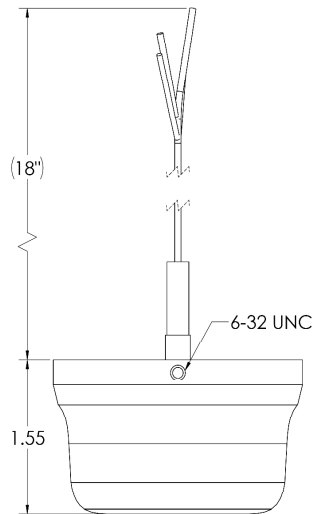
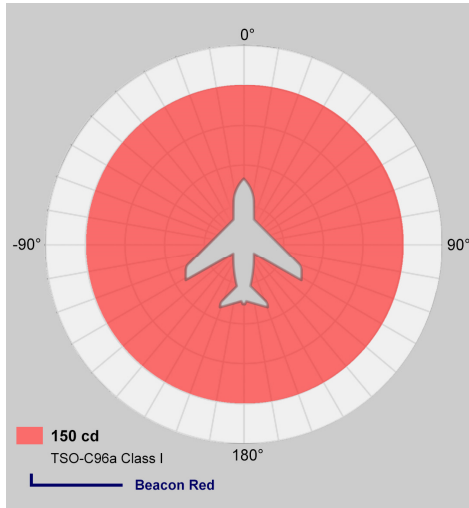




Product Datasheet

SunBeacon II Red Beacon Light

11-2200-(A)-(12)



Voltage: 9-18VDC
Current: Strobe: 1.6A at 14V
Average Power: 22 Watts
Strobe Power Supply: Built In
Synchronization: Built In
Thermal Protection: Built In
Beacon: TSO'd (C-96a Class I)

Length: 2.5"
Width: 2.5"
Height: 1.6"
Weight: 3.5Oz
Heat Sink Material: Anodized Aluminum
Lens Material: Polycarbonate
Mounting: Bracket (optional)
MTBF: >30,000 Hours
Temperature Range: -55C to +70C